



H10 Palacio Colomera

Cordova

★★★★

Plaza de las Tendillas, 3 · 14002 · Cordova · Spain
 + 34 957 216 800
 h10.palacio.colomera@h10hotels.com
hotelh10palaciocolomera.com

 [@h10palaciocolomera](https://www.instagram.com/h10palaciocolomera)

 [@h10palaciocolomera](https://www.facebook.com/h10palaciocolomera)

Located in the heart of Cordova, the **H10 Palacio Colomera** is exceptionally located in the emblematic Plaza de las Tendillas, known for its iconic clock that strikes the hour and on the half hour with original flamenco guitar touches instead of chimes. The Plaza de las Tendillas is also known for being one of the commercial hubs of the city with a wide variety of restaurants and bars and is the starting point for trips to the main tourist attractions and routes of interest in the city.

Places of interest

- 0 m from the city centre and the starting point for the patios of flowers route
- 400 m from the Cristo de los Faroles crucifix
- 700 m from the Mosque-Cathedral of Cordova
- 700 m from the Judería Jewish quarter
- 800 m from the Palacio de la Merced
- 900 m from the Palacio de Viana
- 1 km from the Caliphal Baths
- 1.3 km from the AVE - RENFE train station
- 132 km from Seville airport
- 167 km from Málaga airport

Coordinates: 37° 88' 42.54" N / 4° 77' 93.48" W



Description

The **H10 Palacio Colomera** is a hotel located in the former Casa Colomera, built in 1928, which was the palace of the counts of the same name. Located in the central Plaza de las Tendillas, the hotel project has sought to recover the palatial atmosphere of the old building. It has cosy rooms, a garden patio with a plunge pool and a Rooftop Bar overlooking the Plaza de las Tendillas. Its recent extension adds to the hotel the new breakfast restaurant Las Meninas, a second Rooftop Bar with 360° views of the city, a large and luminous rest area in the atrium of the hotel, and cosy rooms for small meetings.

- 102 rooms
- Complimentary Wi-Fi throughout the hotel
- Las Meninas Restaurant for breakfast
- Rooftop Bar 1928 with views of the Plaza de las Tendillas
- New Rooftop with 360° views over the city
- Bar El Rincón de las Tendillas with terrace
- New relaxation area in the atrium of the hotel
- Landscaped patio with plunge pool and sunbeds area



ROOMS



The elegant rooms at H10 Palacio Colomera have been designed to create a peaceful environment and provide maximum comfort. They are equipped with all the amenities:

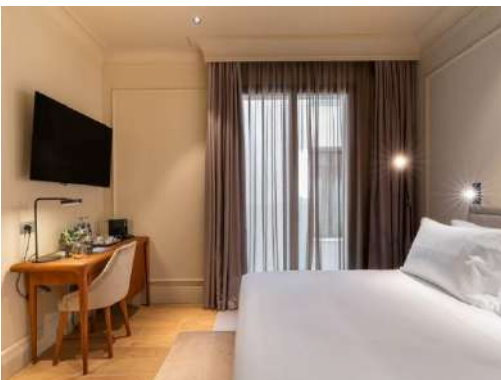
- 49" Smart TV with international channels with Chromecast
- Complimentary bottle of water per person upon arrival
- Complimentary Nespresso coffee machine with daily restocking of 100% compostable capsules
- Minibar (\$ according to consumption) and kettle (on request and subject to availability)
- Bathrobe and slippers
- Digital in-room safe
- USB ports and international plug sockets
- Individually adjustable climate control system and ceiling fan
- Iron and ironing board (on request and subject to availability)
- Bathroom with professional hairdryer, rain shower and magnifying mirror
- Eco-friendly dispensers from the Earth Collection



ESSENTIAL ROOMS

Comfortable smaller 17 m² (182 ft²) rooms with an interior view of the hotel courtyard.

They are equipped with a Queen Size bed (1.50 x 2.00 m) and can accommodate one adult.



DOUBLE COLOMERA ROOMS

New rooms of approximately 22 m² (237 ft²). They have views of the different atriums of the hotel.

They can have a king-size bed (2.00 x 2.00 m) or twin beds (1.00 x 2.00 m) and have a maximum occupancy of two adults.



DOUBLE CORDOVA ROOMS

New and comfortable rooms of approximately 22 m² (237 ft²). All of them exterior.

They can offer a king size bed (2.00 x 2.00 m) or twin beds (1.00 x 2.00 m). Maximum capacity of 2 adults.



DOUBLE TERRACE ROOMS

New exterior rooms of 18m² (193 ft²) with an elegant and sophisticated décor and a furnished terrace overlooking the street of 15m² (161 ft²).

They are equipped with a Queen Size bed (1.50 x 2.00 m) and can accommodate up to two adults.



DOUBLE ROOMS PLAZA TENDILLAS

Rooms of approximately 22 m² (237 ft²) overlooking the emblematic Plaza de las Tendillas.

They have a king-size bed (2.00 x 2.00 m) or twin beds (1.00 x 2.00 m) and can accommodate up to 2 people.

Most of them have a balcony.

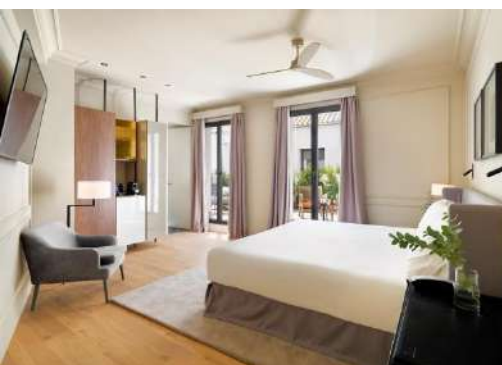


JUNIOR SUITE

Spacious rooms measuring between 30 and 38 m² (323 and 409 ft²) with views of the Plaza de las Tendillas.

They incorporate a sleeping area with a king-size bed (2.00 x 2.00 m) or twin beds (1.00 x 2.00 m), plus an integrated living area with a 55' Smart TV and a sofa-bed (1.60 x 1.90 m).

They can accommodate up to 3 adults + 1 child or 2 adults + 2 children.



JUNIOR SUITE TERRACE

An exclusive Junior Suite with a total of 75 m² (807 ft²). The interior area is 50 m² (531 ft²) and consists of a bedroom with a king-size bed (2.00 x 2.00 m) or twin beds (1.00 x 2.00 m), a separate living area with two sofa beds (0.90 x 1.90 m) and a spectacular 25 m² (269 ft²) fully equipped terrace overlooking the landscaped courtyard.

It has a 55' Smart TV in the bedroom and another one in the living area and can accommodate up to 2 adults + 2 children.



DUPLEX SUITE TERRACE

A magnificent room with a total of 90 m² (969 ft²) spread over two floors. The interior totals 60 m² (646 ft²) and the terrace 30 m² (323 ft²).

On the ground floor there is a living room with a 55" Smart TV and two divans measuring 0.90 x 1.80 m (0.90 x 1.80 m). Upstairs there is a bedroom with a king-size bed (2.00 x 2.00 m), an integrated sitting area with a 55" Smart TV and a 0.90 x 1.80 m divan, as well as a spectacular furnished terrace overlooking the hotel's landscaped courtyard.

It can accommodate up to 4 people and is ideal for families requiring additional space.

Note: the décor, size and views of the rooms may vary depending on the room allocated.



RESTAURANTS AND BARS



LAS MENINAS RESTAURANT

The meticulously designed restaurant, serving a full breakfast buffet made with high-quality produce, features coffered ceilings and large picture windows topped off with works of art by Gabriel Martín Roig, from whom this new space takes its name.

BAR EL RINCÓN DE LAS TENDILLAS

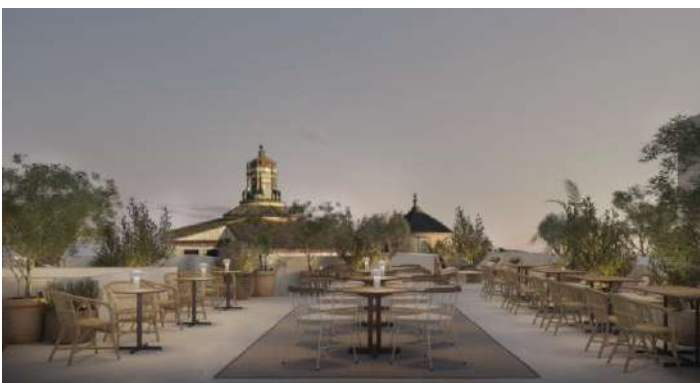
An elegant bar with large windows overlooking the Plaza de las Tendillas. Ideal for a coffee or refreshment break as well as a selection of delicious light dishes.

ROOFTOP BAR 1928

Located on a panoramic terrace, on the top floor of the building, from where you can enjoy spectacular views of the Plaza de las Tendillas and the Mosque-Cathedral of Córdoba. The space offers a menu that includes light dishes and cocktails.

ROOFTOP

New Rooftop with bar service and stunning 360° views of the city of Cordova.



NEW ROOFTOP 360°



LAS MENINAS RESTAURANT FOR BREAKFAST



QUALITY CERTIFICATES AND AWARDS



GDS

- SABRE: WV 328114
- APOLLO/GALILEO: WV F5581
- WORLDSPAN: WV SVQ16
- AMADEUS: WV ODB916
- PEGASUS/TRAVELWEB NET: WV 109916



Stay Green is the H10 Hotels Sustainability Plan. In line with our commitment to society and the environment, its goal is to promote a model for responsible tourism in all our destinations.

As part of the Stay Green programme, the H10 Palacio Colomera hotel has implemented the following actions:






Featured SDGs

- 100% renewable electricity consumption
- Harnesses ambient heat to generate hot water (Heat Pumps)
- Tablets in reception to promote digitalisation and encourage paper saving
- Collaborates with Fundación Don Bosco, offering placements to students at risk of social exclusion
- Donates textile material to Cáritas

	<p>TRIPADVISOR</p> <p>Travellers' Choice - 2023, 2022 Top 10 de las cadenzas hoteleras "más excelentes" del mundo - 2018</p>
	<p>BOOKING.COM</p> <p>Traveller Review Award - 2024, 2023, 2022, 2021, 2020</p>
	<p>HOTELS.COM</p> <p>Loved by Guests - 2021</p>

Information and bookings:
+34 900 444 466
reservas@h10hotels.com
h10hotels.com

 [@h10hotels](https://www.instagram.com/h10hotels)
 [@H10.Hotels](https://www.facebook.com/H10.Hotels)
 [@h10hotels](https://www.tiktok.com/@h10hotels)



Hotel website



Hotel web app

