

C/ Punta del Roquito, 2 · 35627 · Costa Calma · Fuerteventura · Spain  
Tel.: +34 928 87 53 53

[h10.playa.esmeralda@h10hotels.com](mailto:h10.playa.esmeralda@h10hotels.com)  
[www.hotelh10playaesmeralda.com](http://www.hotelh10playaesmeralda.com)

@h10playaesmeralda

@h10playaesmeralda

Information and bookings  
Tel.: +34 900 444 466

[reservas@h10hotels.com](mailto:reservas@h10hotels.com)  
[www.h10hotels.com](http://www.h10hotels.com)

@h10hotels

@H10.Hotels

[www.youtube.com/user/h10hotels](http://www.youtube.com/user/h10hotels)

This hotel is recommended for guests aged 18 and over

## Setting

The **H10 Playa Esmeralda** is located in Costa Calma, on the southern part of the island of Fuerteventura, with direct access to the spectacular beach of Sotavento. Known for its wonderful white sand beaches and turquoise waters, Costa Calma is the perfect destination for enjoying a pleasant holiday with your significant other or with friends. Moreover, it is the ideal place for scuba diving, windsurfing and kitesurfing as well as other water activities.

- 25 m from Sotavento beach
- 1 km from the centre of Costa Calma (shopping area)
- 20 km from Jandía Natural Park
- 20 km from the port of Morro Jable (departure point Gran Canaria and Tenerife)
- 20 km from Jandía golf course
- 30 km from Las Playitas golf course
- 45 km from Betancuria Natural Park
- 57 km from the golf courses of Caleta de Fuste
- 65 km from Fuerteventura airport
- 70 km from Puerto del Rosario
- 85 km from the Grandes Playas de Corralejo
- 85 km from Corralejo Dunes Natural Park
- 90 km from the port of Corralejo (departure point for Isla de Lobos and Lanzarote)

Coordinates: 28° 8' 56.40" N – 14° 14' 6.72" W



## Description

Located on the seafront, with stunning views of fine sandy beaches and turquoise waters, the **H10 Playa Esmeralda** features spectacular interior design as well as rooms that were completely renovated in 2019. The hotel is specialized in holidays for adults and offers large peaceful swimming pools, a varied range of dining options, and Privilege, Exclusive Rooms and Services and the Despacio Spa Centre.

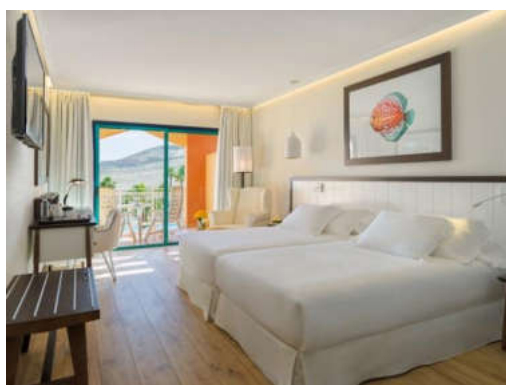
- 333 rooms**
- Complimentary Wi-Fi** throughout the hotel
- 1 outdoor swimming pool**
- 1 outdoor jacuzzi**
- 2 restaurants, lobby bar, snack bar and Mike's Coffee**
- Privilege, Exclusive Rooms and Services**
- Despacio Spa Centre**
- Blue Team, tennis court (\$) and minigolf (\$)**
- 3 meeting rooms**
- Boutique**
- Hairdressing service (\$)**
- All Inclusive**



## Rooms

The large, bright rooms at the **H10 Playa Esmeralda** are equipped with all the amenities you could need for a comfortable stay:

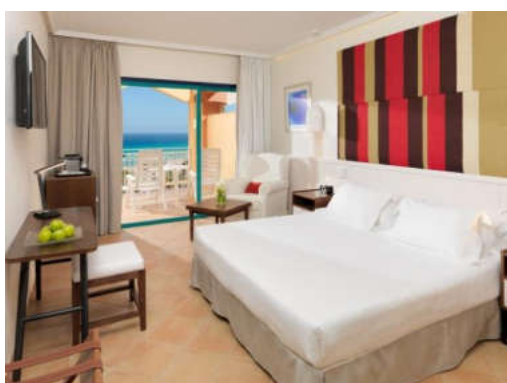
- Complimentary bottle of water
- LCD TV with international channels
- Minibar (\$ according to consumption and on request)
- In-room safe (\$)
- Air conditioning
- Fully equipped bathroom with hairdryer
- Eco-friendly dispensers from the Earth Collection



DOUBLE ROOM

**Double Rooms:** Comfortable 30 m<sup>2</sup> rooms with a terrace overlooking the garden or the swimming pool. They feature a 1.80 x 2.00 m double bed or two 1.20 x 2.00 m twin beds. There is the option of adding an extra bed to accommodate a 3<sup>rd</sup> person.

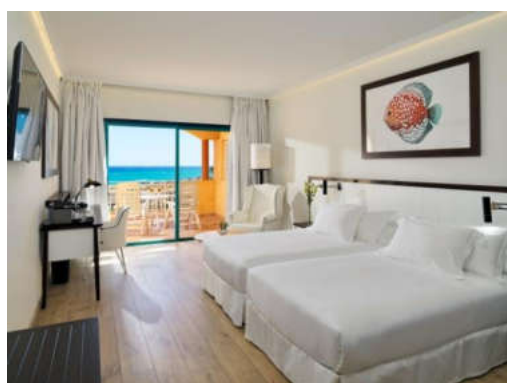
There is also the option of booking Double Rooms with sea views (\$).



SEA VIEW SUPERIOR DOUBLE ROOM

**Sea View Superior Double Rooms:** Comfortable 30 m<sup>2</sup> rooms on the upper floors of the hotel with a terrace and stunning sea views. They feature a 1.80 x 1.90 m double bed or two 1.20 x 1.90 m twin beds and can accommodate up to two people. In addition to the amenities available in other rooms, they also offer:

- Nespresso machine with 100% compostable capsules
- Complimentary bottle of water upon arrival
- Bathrobe and slippers
- Bathtub with thermostatic shower and rain shower



PRIVILEGE ROOM

**Privilege Rooms:** 34 m<sup>2</sup> rooms located on the seafront They have a spectacular terrace for the exclusive use of guests who purchase Privilege, Exclusive Rooms and Services. They feature two 1.20 x 2.00 m twin beds and can accommodate up to two people. In addition to the amenities available in other rooms, they also offer:

- Welcome gift
- Nespresso machine with 100% compostable capsules
- Pillow-top mattress, pillow menu, bathrobe, slippers and an exclusive pool towel
- Complimentary in-room safe
- Room cleaning twice a day and night-time turndown service
- Magnifying mirror
- Bathtub with thermostatic shower and rain shower



JUNIOR SUITE

**Junior Suites:** Spacious 45 m<sup>2</sup> rooms with a bedroom with twin beds (1.20 x 2.00 m), an adjoining living room with a sofa bed (1.90 m) and a terrace overlooking the gardens or the sea (\$). They can accommodate up to 3 adults. In addition to the amenities available in other rooms, they also offer:

- Nespresso machine with 100% compostable capsules
- Bathrobe and slippers
- Magnifying mirror
- Bathtub with thermostatic shower and rain shower



PRIVILEGE JUNIOR SUITE LIVING ROOM

**Privilege Junior Suites:** Spacious 55 m<sup>2</sup> rooms located on the seafront. They include a bedroom with twin beds (1.20 x 2.00 m), an adjoining living room with a sofa-bed (1.90 m), and a terrace. They are exclusively for guests who have purchased Privilege, Exclusive Rooms and Services and offer all the amenities mentioned in the Privilege Rooms section.

They can accommodate up to 3 people.



ESMERALDA ROYAL SUITE

**Esmeralda Royal Suites:** Spectacular duplex apartments located on the seafront. The interior space measures 70 m<sup>2</sup> and features a bedroom with a King Size bed (2 x 2 m) and a spacious living room with sofa. Outside there are two furnished terraces totalling 50 m<sup>2</sup>. In addition to the services available in other rooms, guests will also be able to enjoy all the amenities of the Privilege service:

- Two 55" Smart TVs (one in the bedroom and one in the living room)
- Pillow menu, ceiling fan in the bedroom and kettle
- Bathroom with double rain showers, double washbasins and scales.

They can accommodate up to 3 people.

**Note:** the décor, size and views of the rooms may vary depending on the room allocated.

## Restaurants and bars



JANDÍA

**Jandía:** an elegant buffet restaurant with show cooking and boulangerie.

It features a pleasant terrace overlooking the sea.



PRIVILEGE EL JABLE

**Privilege El Jable:** à la carte restaurant located in the Privilege Lounge and exclusively for guests who have signed up for Privilege, Exclusive Rooms and Services.

In addition to the menu it also offers the chef's daily recommendation for a starter and a main course.



MIKE'S COFFEE

**Mike's Coffee:** specializing in coffee and homemade pastries, as well as a wide selection of teas and smoothies.



SNACK BAR MAXORATA

**Snack Bar Maxorata:** a space for enjoying snacks and cocktails in a relaxed setting by the pool.



BLUE BAR

**Blue Bar:** a stunning bar located in the lobby and presided over by a unique bar shaped like a cage. It offers views of the sea in addition to a pleasant terrace.



BLUE BAR TERRACE

**Blue Bar Terrace:** a terrace with magnificent views of the Atlantic Ocean. It is the perfect place to finish off the day with a cocktail while enjoying the pleasant climate of Fuerteventura.

**Dress code:** Gentlemen are required to wear a shirt or polo shirt and long trousers in the restaurants for the evening meal and ladies are required to dress formally.

## All Inclusive

Meals, snacks, national and international drinks and cocktails.

Drinks at Mike's Coffee.

Access to both the tennis court and minigolf is free.

## Privilege

For a unique experience, the **H10 Playa Esmeralda** offers the possibility of signing up for **Privilege, Exclusive Rooms and Services**.

**Privilege Lounge:** an air-conditioned lounge with drinks service, Nespresso machine, teas and infusions, sweet and savoury snacks, LED TV and a computer with Internet access. It has access to a poolside terrace.

### Food and drinks:

Breakfast and dinner at the Privilege Restaurant with à la carte service and the chef's daily recommendations.

Meals and drinks at Mike's Coffee and Snack Bar Maxorata included (only for guests who are staying on an All Inclusive basis).

### Exclusive services:

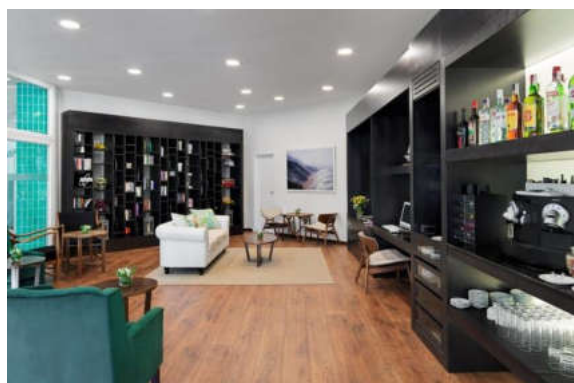
Personalized check-in and check-out at the Privilege desk.

Late check-out (subject to availability).

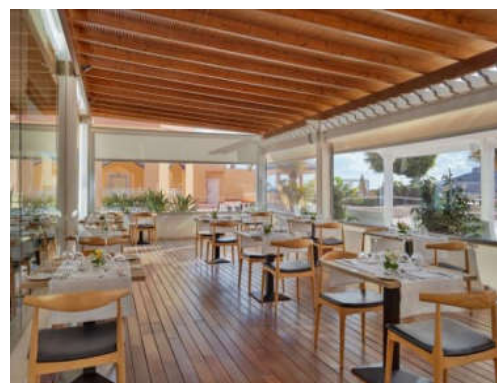
Porter service.

Guest Service available.

**Privilege Rooms:** see details in the **Rooms** section.



PRIVILEGE LOUNGE



PRIVILEGE LOUNGE TERRACE

## despacio spa centre

The **H10 Playa Esmeralda** has a **Despacio Spa Centre**, perfect for disconnecting and pampering body and mind.

- Heated indoor pool
- Jacuzzi, sauna and Turkish bath
- Gym
- Massage service (\$)
- Personalized health and beauty treatments (\$)
- Relaxation area

Free entry to the gym and other **Despacio Spa Centre** facilities. Treatments and massage services come with a fee.



INDOOR HEATED POOL



GYM



TURKISH BATH

## BLUE Team

The **H10 Playa Esmeralda** offers an extensive sports, games and activities programme led by our **Blue Team** entertainment team.

Facilities: tennis court (\$) and minigolf (\$)

Activities: yoga, aquagym, Pilates, Tai-Chi, stretching and petanque.

And, at night, entertainment shows, music, live shows, etc.



MINI GOLF



MEETINGS & EVENTS  
H10 HOTELS

The **H10 Playa Esmeralda** offers three meeting rooms with everything you might need to hold any kind of event, especially the Tindaya room with a capacity for groups of up to 130 people. The hotel also has other exclusive spaces for holding events, inside and outside, including the magnificent Blue Bar terrace located right in front of the sea.

CAPACITY

Spaces for events	m <sup>2</sup>	Height	CAPACITY							
			Cocktail	Theatre	Classroom	Boardroom	Banquet	Cabaret	“U”	“O”
LOBOS	51	2,5 m	31	66	42	36	48	-	36	-
DUNAS	150	2,5 m	92	101	57	36	88	-	36	-
TINDAYA	214	2,5 m	129	142	105	40	112	50	54	-

\* Maximum capacity (optimal) recommended for these rooms by event type.





LOBOS ROOM



BLUE BAR



## Adults Only

The **H10 Playa Esmeralda** is the perfect place for those seeking a peaceful, exclusive environment for relaxing with your significant other or having a good time with friends. Recommended for adults over 18, the hotel benefits from a wide range of services and leisure activities designed for adults, as well as a carefully prepared range of dining options.



ESMERALDA ROYAL SUITES

## Quality Certificates





## Awards

<b>TRIPADVISOR</b>	Travellers' Choice – 2023, 2021 Certificate of Excellence – 2020, 2019, 2018, 2016, 2015, 2013, 2012, 2011 H10 HOTELS is recognized by Tripadvisor as one of the ten “most excellent” medium-sized hotel chains in the world – 2018
<b>THOMAS COOK</b>	Partner in Excellence – 2017, 2003
<b>TRAVELIFE</b>	Gold Award – 2016, 2014, 2012
<b>HOLIDAYCHECK</b>	Quality Selection – 2014
<b>GRAN HOTEL TURISMO</b>	Best Hotel Chain at the 10 <sup>th</sup> Hotel Initiative Awards – 2014
<b>ZOOVER</b>	Highly Recommended – 2013 Zoover Award – 2012, 2010 Recommended Award – 2011
<b>NECKERMANN</b>	Neckermann Primo – 2012, 2011, 2010, 2009, 2008, 2006, 2005, 2004, 2002
<b>TRAVEL REPUBLIC</b>	Customer Recommendation Awards – 2011
<b>ITS</b>	ITS Red Star Award – 2011
<b>H10 HOTELS</b>	Best holiday hotel chain based on customer satisfaction ratings – 2003, 2002
<b>KUONI</b>	Green Planet Award (Environmental Certificate) - 2002, 2001
<b>ICTE</b>	Quality certificate – 2001
<b>TUI</b>	Quality Award – 2020
<b>BOOKING.COM</b>	Traveller Review Award – 2023, 2022, 2021, 2020 Booking Award – 2018
<b>HOTELS.COM</b>	Loved by Guest 2021



At H10 Hotels, we are committed to the environment, which is why **Stay Green** was created. This sustainability project aims to develop a responsible business model based on three primary lines of action: the elimination of plastics and waste reduction, energy efficiency and the use of green energy, and training and awareness programmes for both our employees and our guests.