

Rambla Catalunya, 7-9 · E-08007 · Barcelona · Spain

T +34 93 214 07 20

[h10.metropolitan@h10hotels.com](mailto:h10.metropolitan@h10hotels.com)

[www.hotelh10metropolitan.com](http://www.hotelh10metropolitan.com)

Information and bookings:

T +34 900 444 466

[reservas@h10hotels.com](mailto:reservas@h10hotels.com)

[www.h10hotels.com](http://www.h10hotels.com)

## Setting

The **H10 Metropolitan** is located on Rambla Catalunya, in the heart of the city, next to Plaça Catalunya, Passeig de Gràcia and Les Rambles. It benefits from a privileged setting, close to Barcelona's main commercial and business hubs, ideal for those looking to be close to the best boutiques, restaurants and bars, as well as major points of interest such as the cosmopolitan El Born neighbourhood and the historic centre of the city.

0 m from the city centre

50 m from Catalunya metro station (Lines 1 and 3) and train station (Renfe and FGC trains)

200 m from Passeig de Gràcia metro station (Lines 2, 3 and 4)

250 m from the Aerobús stop (airport terminals T1 and T2)

600 m from Gaudí's Casa Batlló

650 m from Passeig de Gràcia train station (Renfe trains)

950 m from Barcelona Cathedral

1 km from Gaudí's La Pedrera (Casa Milà)

1.5 km from Barcelona Nord bus station

2.5 km from Port Vell (marina)

2.5 km from the Sagrada Família

2.5 km from the Fira Barcelona - Montjuïc trade fair complex

3 km from Barcelona Sants train station (AVE and Renfe trains)

3 km from Barceloneta beach

5 km from the port of Barcelona (cruises)

5 km from Camp Nou stadium - F.C. Barcelona

6 km from the Fira Barcelona - Gran Vía trade fair complex

12 km from Barcelona-El Prat airport

Coordinates: 41° 23' 15" N / 2° 10' 3" E



## Description

Located in the heart of Barcelona, next to Plaça Catalunya, the **H10 Metropolitan** is an exclusive four-star superior establishment whose interior design is marked by an industrial, factory style. The hotel has elegant rooms, The Kitchen Restaurant for breakfasts, the elegant Edén Bar and two peaceful terraces with sun lounge area and plunge pool, one of them located on the top floor with views of Plaça Catalunya and Tibidabo.

### 85 rooms

**Complimentary Wi-Fi** throughout the hotel and **Business Corner**

**The Kitchen Restaurant** (for breakfast)

**Edén Bar and The Library** multipurpose space

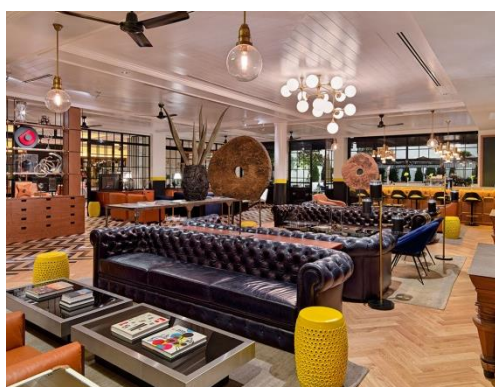
**Edén terrace with plunge pool, sun lounge area and upper floor with Balinese beds**

**TopOn terrace on the 6<sup>th</sup> floor with plunge pool and sun lounge area**

**2 meeting rooms**

**Concierge and porter service**

**Car park** (external service charged separately - access 50 m from the hotel)



## Rooms

The modern and bright rooms of the **H10 Metropolitan** are equipped with top-of-the-range amenities and exclusive services for an unforgettable stay:

49" LED TV with international channels

Nespresso machine

Complimentary bottle of water per person, restocked daily

Minibar (\$ according to consumption)

Bathrobe and slippers

In-room safe

Climate control system

Iron and ironing board

Umbrella

Fully equipped bathroom with rain shower, professional hairdryer, magnifying mirror, scales and Rituals amenities



BASIC ROOM

**Basic Rooms:** smaller rooms with Queen Size bed (1.50 x 1.90 m) and views of the elegant hotel atrium.



CLASSIC DOUBLE ROOM

**Classic Double Rooms:** elegant 18 m<sup>2</sup> rooms with Queen Size bed (1.80 x 2 m) and views of the elegant hotel atrium.



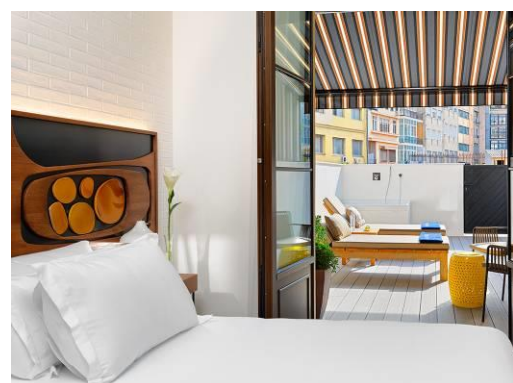
RAMBLA DOUBLE ROOM

**Rambla Double Rooms:** rooms measuring 20 m<sup>2</sup> with a King Size bed (2 x 2 m) or twin beds (1 x 2 m). They have a balcony overlooking Plaça Catalunya. Possibility of booking adapted or triple rooms (these come with a sofa or a chaise-longue that can be set up as a bed if necessary).



DELUXE ROOM WITH TERRACE

**Deluxe Rooms with terrace:** rooms measuring 20 m<sup>2</sup> with a King Size bed (2 x 2 m) or twin beds (1 x 2 m). They have a 5 m<sup>2</sup> furnished terrace with views of a courtyard typical of the buildings in Barcelona's Eixample district and of the hotel pool. Possibility of booking connected rooms, ideal for families.



DELUXE ROOM WITH TERRACE AND JACUZZI

**Deluxe Rooms with terrace and jacuzzi:** rooms measuring 20 m<sup>2</sup> with a King Size bed (2 x 2 m) or twin beds (1 x 2 m) that come with a spectacular private 22 m<sup>2</sup> terrace with jacuzzi and sun loungers. They have views of a courtyard typical of the buildings in Barcelona's Eixample district and of the hotel pool. Possibility of booking connected rooms, ideal for families.



TERRACE AND JACUZZI OF THE GRAND DELUXE ROOM

**Grand Deluxe Rooms with terrace and jacuzzi:** spacious 27 m<sup>2</sup> rooms with a bedroom area and a lounge area with a sofa bed, as well as a magnificent 18 m<sup>2</sup> private terrace with jacuzzi and sun loungers. They have views of a courtyard typical of the buildings in Barcelona's Eixample district and of the hotel pool, as well as direct access to the area with Balinese beds located in the upper area of the Edén Terrace. In addition to the amenities available in the other rooms, they also feature a Marshall Bluetooth speaker. They can accommodate up to 3 people and there is the possibility of booking connected rooms, ideal for families.

**Note:** the décor, size and views of the rooms may vary depending on the room allocated.



## Restaurants and bars



THE KITCHEN RESTAURANT

**The Kitchen Restaurant:** it offers a tasty breakfast buffet prepared with high-quality products as well as a selection of hot à la carte dishes made to order. Possibility of holding private events.



EDÉN BAR

**Edén Bar:** located in the lobby, this the perfect place to have a drink or a coffee at any time of day. It features a selection of delicious light dishes such as salads, sandwiches and tapas, as well as cocktails.






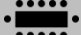




EDÉN TERRACE

**Edén Terrace:** a pleasant terrace located next to the lobby, with bar service. It features a unique vertical garden, a plunge pool with sun lounge area, as well as a large space with Balinese beds on an upper floor overlooking an internal courtyard typical of the buildings in Barcelona's Eixample district.

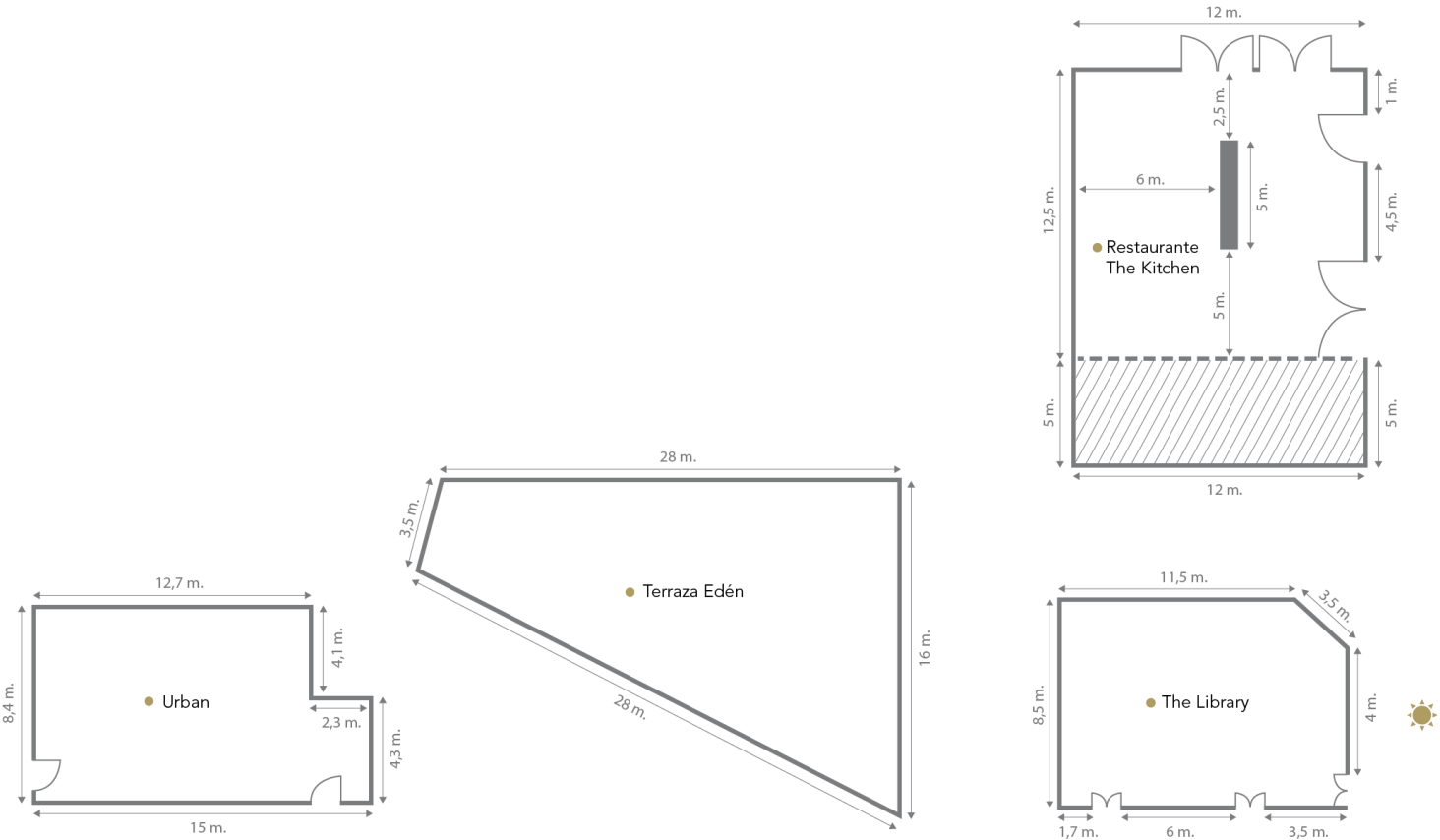



MEETINGS & EVENTS  
H10 HOTELS

The **H10 Metropolitan** has two meeting rooms equipped with everything you need to hold any kind of event and with a maximum capacity of 80 people. One of them is The Library, a multipurpose space with natural light and very cosy decor. In addition, the Edén Terrace is ideal for drinks receptions or coffee breaks. The Kitchen Restaurant also offers the possibility of holding private events.

Spaces for events	m <sup>2</sup>	Height	CAPACITY							
			 Drinks reception	 Theatre	 Classroom	 Boardroom	 Banquet	 Cabaret	 U-SHAPE	 O-SHAPE
URBAN	125	3 m	80	80	55	40	60	40	29	-
THE LIBRARY	117	3 m	70	70	-	30	-	-	25	-
EDÉN TERRACE	280	-	100	-	-	-	-	-	-	-
THE KITCHEN RESTAURANT	132	2.80 m	80	-	-	-	70	-	-	-

\* Maximum capacity (optimal) recommended for these rooms by event type.



 Luz Natural · Natural Light



## GDS

**SABRE:** PH 484437  
**APOLLO/GALILEO:** PH E1398  
**WORLDSPAN:** PH BCNME  
**AMADEUS:** PH BCNH10  
**PEGS ADS:** PH 79446  
**TRAVELWEB:** PH 79446

## Quality Certificates



## Awards

<b>TRIPADVISOR</b>	Certificate of Excellence – 2019, 2018 and 2017 H10 HOTELS is recognized by TripAdvisor as one of the ten "most excellent" medium-sized hotel chains in the world. – 2018
<b>BOOKING.COM</b>	Booking Award – 2018
<b>GOHOTELS</b>	Outstanding Service Award – 2018
<b>JET2 - CITY BREAKS</b>	Quality Award – 2017
<b>CONDÉ NAST TRAVELER</b>	Best City Hotel in Spain – 2016
<b>HOTELS.COM</b>	Excellent Guest Review Score – 2016
<b>GRAN HOTEL TURISMO</b>	Best Hotel Chain at the 10 <sup>th</sup> Hotel Initiative Awards – 2014