



# H10 London Waterloo

London

★★★★

284 to 302 Waterloo Road · SE1 8RQ London · United Kingdom  
 T +44 (0) 207 928 4062  
[h10.london.waterloo@h10hotels.com](mailto:h10.london.waterloo@h10hotels.com)  
[hotelh10londonwaterloo.com](http://hotelh10londonwaterloo.com)

 [@h10londonwaterloo](https://www.instagram.com/h10londonwaterloo)

 [@H10.London.Waterloo](https://www.facebook.com/H10.London.Waterloo)

H10 London Waterloo is located on the well-known Waterloo Road, in South Bank, a 5-minute walk from Waterloo Station. A fantastic location that's very close to some of the city's main points of interest, such as Parliament, Big Ben, Westminster Abbey and the London Eye.

## Points of interest

300 m / 0.2 miles from Lambeth North Station (Bakerloo line)

450 m / 0.3 miles from Waterloo Station (Jubilee, Bakerloo, Northern lines)

### Train:

450 m / 0.3 miles from Waterloo Station

1.7 km / 1.1 miles from Charing Cross Station

2.7 km / 1.7 miles from Victoria Station

4.9 km / 3.1 miles from King's Cross/Saint Pancras (EUROSTAR) station

### Airport:

14 km / 8 miles from London City Airport

30 km / 18 miles from Heathrow Airport

46 km / 29 miles from Luton Airport

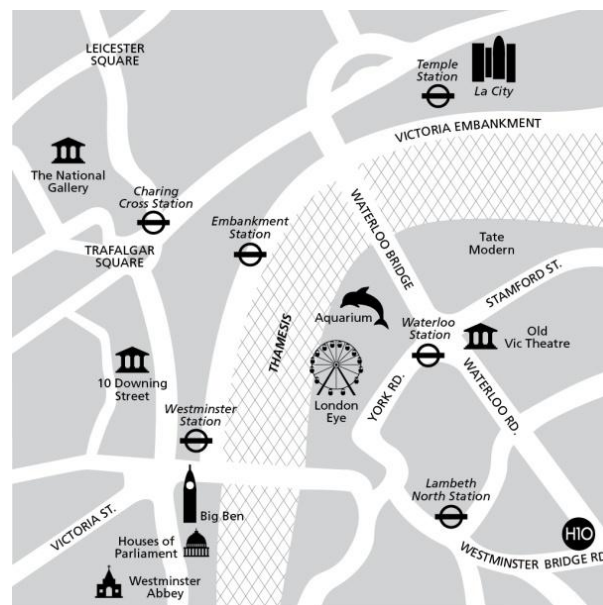
50 km / 31 miles from Stansted and Gatwick airports

### Tourist points of interest:

900 m / 0.6 miles from the London Eye

2.2 km / 1.4 miles from Big Ben/Parliament/Westminster Abbey

Coordinates: 51° 29' 55.9818" N / 0° 6' 22.6548" W



## Description

Located in the South Bank area, near the Parliament and Big Ben, the London Eye and Tower Bridge, H10 London Waterloo is an excellent choice for a stay in London. The hotel features newly refurbished facilities, fine cuisine, two meeting rooms and the exclusive Rooftop Waterloo Sky Bar overlooking the city, offering spectacular views.

- 170 Rooms
- Free Wi-Fi throughout the hotel
- Three O Two Restaurant
- Circus Bar
- Waterloo Sky Bar on the 8th floor, with breathtaking views of the city
- Two meeting rooms



## ROOMS



H10 London Waterloo has modern, bright rooms, with laminated wood floors and all the amenities to ensure your wellness:

- 42" LCD TV with international channels and Chromecast
- USB charger and international plug sockets
- Minibar (\$ according to consumption)
- Kettle (restocked daily)
- Free in-room safe
- Iron and ironing board
- Deluxe topper
- Climate control system
- Fully equipped bathroom with professional hairdryer, magnifying mirror and sustainable dispensers from the Earth Collection



### CLASSIC SUPERIOR ROOMS

Beautifully refurbished 19 m<sup>2</sup> (205 ft<sup>2</sup>) room, designed with a modern sophisticated touch, featuring street views, wooden floors, a full-length mirror, and stylish walk-in showers. They feature one Queen Size bed (1.80 x 2 m) or two twin beds (1.05 x 2 m).

They can accommodate up to 2 adults.



### CLASSIC SUPERIOR SKY VIEW ROOMS

Recently renovated 19 m<sup>2</sup> (205 ft<sup>2</sup>) room located on the 8th floor and above. Situated on the hotel's upper floors, it offers stunning views of the city. It features wooden floors, a full-length mirror, and elegant walk-in showers. Equipped with a Queen Size bed (1.80 x 2 m) or two twin beds (1.05 x 2 m).

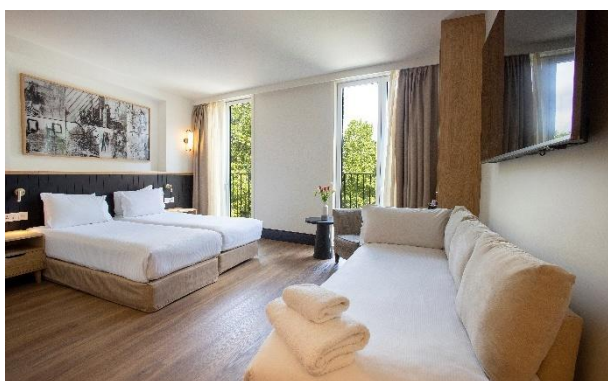
Can accommodate up to 2 adults.



### CLASSIC SUPERIOR SKY VIEW TERRACE ROOM

Located on the 9th floor, this recently renovated 19 m<sup>2</sup> (205 ft<sup>2</sup>) room features a new private terrace from which you can enjoy breathtaking views of the city and a partial view of the iconic London Eye. It is elegantly decorated with wooden floors, a full-length mirror, and stylish walk-in showers.

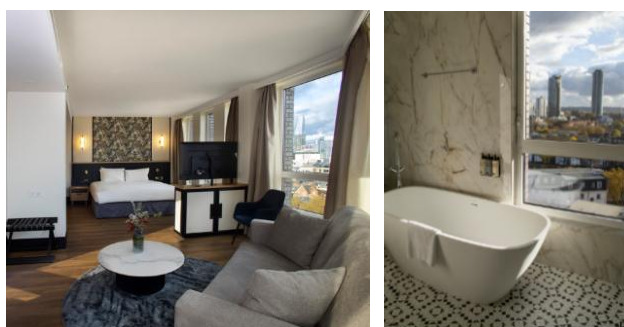
Can accommodate up to 2 adults.



### CLASSIC TRIPLE SUPERIOR ROOMS

Recently renovated 25 m<sup>2</sup> (269 ft<sup>2</sup>) Triple Room, offering street views, wooden floors, a full-length mirror, and elegant walk-in showers. The room is furnished with a sofa bed, making it ideal for families or three adults. It features one Queen Size bed (1.80 x 2.00m) and two twin beds (1.20 x 2.00m).

Can accommodate up to 3 adults or 2 adults and 1 child.



### JUNIOR SUITE SKY VIEW

New 40 m<sup>2</sup> Junior Suites located on the hotel's upper floors. They feature a King Size bed (2 x 2 m) and large floor-to-ceiling windows with magnificent views of the London skyline. In addition to the standard amenities found in all our rooms, the Junior Suite Sky View also offers:

- Welcome gift
- Complimentary bottle of cava
- 49" Smart TV
- Sofa bed
- Nespresso coffee machine with daily replenishment of 100% compostable capsules
- Bathrobe and slippers, ceramic hair straighteners, and a high-speed ionic hair dryer
- Complimentary umbrella

Can accommodate up to 3 adults or 2 adults and 2 children.

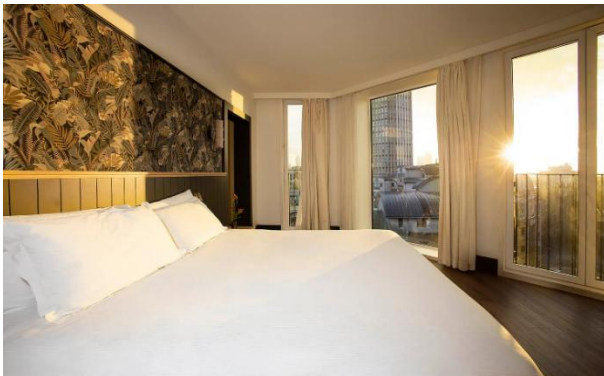


### JUNIOR SUITE LONDON EYE

New 36 m<sup>2</sup> Junior Suite London Eye rooms, located from the 9th floor upwards, offering privileged views of the London Eye. They feature a Queen Size bed (1.80 x 2 m) and, in addition to the amenities available in our other rooms, they also offer:

- Welcome gift
- Complimentary bottle of cava
- 50" Smart TV
- Sofa bed
- Nespresso coffee machine with daily replenishment of 100% compostable capsules
- Bathrobe and slippers, ceramic hair straighteners, and a high-speed ionic hair dryer
- Complimentary umbrella

Can accommodate up to 3 adults or 2 adults and 2 children.



### SUITE SKY VIEW TERRACE

Exclusive, recently renovated 40 m<sup>2</sup> (430 sq ft) suite on the 9th floor, offering breathtaking city views. This sophisticated suite includes two separate spaces and two bathrooms; one equipped with an elegant bathtub and a separate walk-in shower.

- Furnished terrace with city views
- Welcome gift
- Complimentary bottle of cava
- 49" Smart TV
- Sofa bed
- Nespresso coffee machine with daily replenishment of 100% compostable capsules
- Bathrobe and slippers, ceramic hair straighteners, high-speed ionic hair dryer, and handheld garment steamer
- Complimentary umbrella

Can accommodate up to 3 adults or 2 adults and 2 children.

\*This room is exclusively available on our website.



**Note:** room décor, size and views may vary depending on the room allocated.



## RESTAURANTS AND BARS



### THREE O TWO\* RESTAURANT

A modern à la carte restaurant located on the first floor with large windows overlooking the street. It offers a full breakfast made with high-quality products, as well as an evening menu inspired by Spanish cuisine.



### CIRCUS BAR

Located in the hotel lobby, the Circus Bar menu offers classic international cocktail options, as well as snacks such as salads and sandwiches.



### WATERLOO SKY BAR\*

Located on the 8th floor of the hotel, it has a terrace with stunning views of the London skyline. It is the ideal place to enjoy a pleasant evening in a cosmopolitan atmosphere, offering trendy cocktails and international classics, as well as an interesting tapas menu.

\*Bar service and access to the terrace may not be available depending on the season.



## SERVICES AND EXPERIENCES

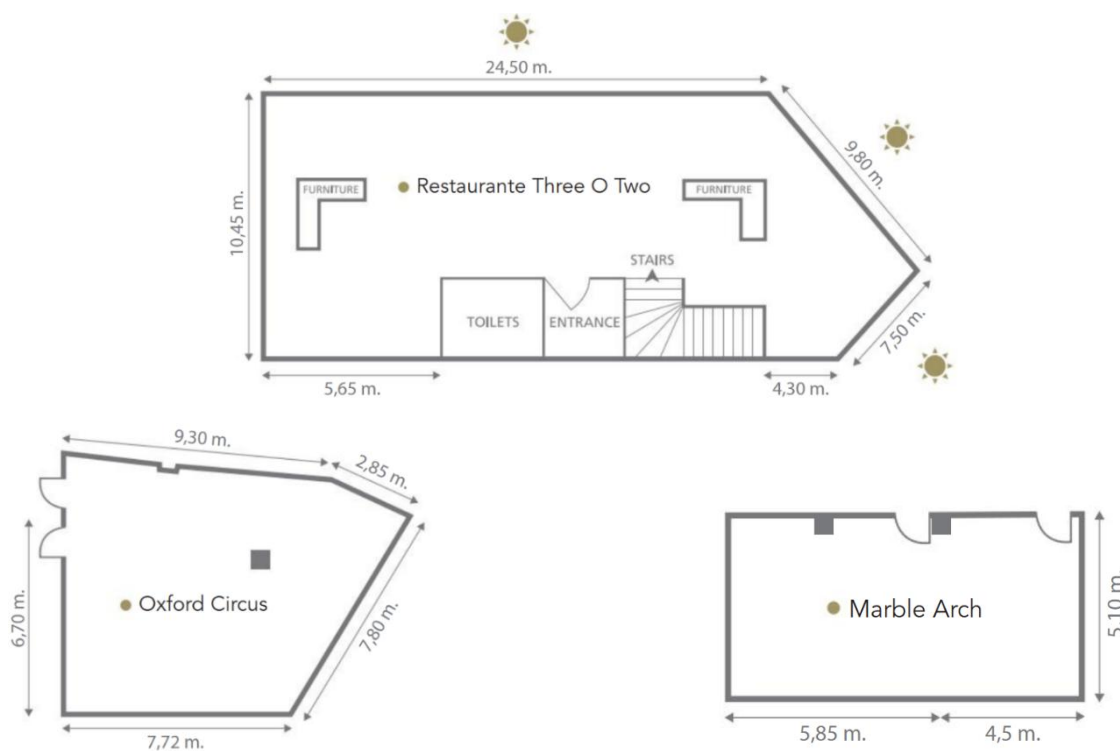


H10 London Waterloo has two meeting rooms equipped with everything necessary to hold work meetings. In addition, the Three O Two Restaurant, with natural light, offers an exclusive space for any kind of celebration or event.

### MEETINGS & EVENTS H10 HOTELS

Spaces for events	m <sup>2</sup>	ft <sup>2</sup>	Height	CAPACITY								
				Drinks reception	Theatre	School	Boardroom	Banquet	Cabaret	“U”	“O”	
OXFORD CIRCUS*	80	861	3 m	60	60	41	21	30	24	23	25	
MARBLE ARCH	53	570	3 m	25	36	24	22	-	-	21	23	
THREE O TWO RESTAURANT	269	2895	3 m	240	-	-	80	120	-	-	-	

\*There is a pillar at the left of the room. Maximum capacity (optimal) recommended for these spaces by event type.



Área y Capacidad · Area and Capacity

Luz Natural · Natural Light



OXFORD CIRCUS ROOM



COCKTAIL AT THE THREE O TWO



MARBLE ARCH ROOM

perfect day  
Weddings  
& Celebrations

At H10 London Waterloo, we take care of every little detail, so your celebration turns out just how you dreamed it would. The hotel offers fine, signature cuisine, a professional, personalised service, as well as unique spaces for banquets or private events.



BANQUET



WATERLOO SKY BAR



## QUALITY CERTIFICATIONS AND AWARDS



At H10 Hotels, we are committed to the environment, which is why we created Stay Green – a sustainability project aimed at developing a responsible business model based on three main areas of action: elimination of plastics and waste reduction, energy efficiency and use of green energy, and training and awareness programmes for both our employees and guests.

As part of the Stay Green programme, the H10 London Waterloo hotel has implemented the following actions:



SDG highlights

- 100% renewable electricity consumption.
- Tablets in reception to promote digitalisation and encourage paper saving.
- The Hotel provides a city of London public transport card to every hotel employee.
- Regularly raises funds through guests for Action Against Hunger.
- Collects food to donate to the Oasis food bank to help underprivileged families in the neighborhood.

## Awards and recognitions



BIOSPHERE TOURISM  
BIOSPHERE SUSTAINABLE  
2024



TÜV RHEINLAND  
ISO 9001:2015  
2024



H10 HOTELS  
H10 QUALITY EXCELLENCE  
MANAGEMENT SYSTEM  
2024



RESTAURANT GURU  
RESTAURANTE  
RECOMENDADO  
"WATERLOO SKY BAR" - 2023



OPENTABLE  
DINNERS' CHOICE  
"THREE O TWO" - 2023



TRIVAGO  
MEJOR DESAYUNO  
2017



BOOKING.COM  
TRAVELLER REVIEW AWARD  
2025, 2024, 2023, 2022, 2021



HOTELS.COM  
LOVED BY GUESTS  
2021



TRIPADVISOR  
TOP 10 DE LAS CADENAS  
HOTELERAS "MÁS  
EXCELENTES" DEL MUNDO  
2018



TRIPADVISOR  
TRAVELLERS' CHOICE  
2024, 2023, 2022, 2021, 2020





HOLIDAYCHECK  
RECOMMENDED ON  
HOLIDAYCHECK  
2025, 2017

Information and bookings:  
+34 900 444 466  
[reservas@h10hotels.com](mailto:reservas@h10hotels.com)  
[h10hotels.com](http://h10hotels.com)



Website

 [@h10hotels](https://www.instagram.com/h10hotels)  
 [@H10.Hotels](https://www.facebook.com/H10.Hotels)  
 [@h10hotels](https://www.tiktok.com/@h10hotels)



Web app hotel

