


Playa La Enramada, La Caleta · 38679 · Costa Adeje · Tenerife · Spain

T + 34 922 71 41 71

[h10.costa.adeje.palace@h10hotels.com](mailto:h10.costa.adeje.palace@h10hotels.com)

[hotelh10costaadejepalace.com](http://hotelh10costaadejepalace.com)

 @h10costaadejepalace


 @h10costaadejepalace


Information and bookings:


T +34 900 444 466

[reservations@h10hotels.com](mailto:reservations@h10hotels.com)

[h10hotels.com](http://h10hotels.com)

 @h10hotels

 @H10.Hotels

 @h10hotels

## Setting

The **H10 Costa Adeje Palace** is located on the Costa Adeje, in southern Tenerife, one of the best known tourist destinations on the island, with vast protected natural parks, beautiful beaches and rich marine life – including a world-famous colony of whales and dolphins. It is also home to the elite athletic training centre Tenerife Top Training and one of the best golf courses on the island.

0 m from La Enramada beach

500 m from Playa del Duque beach

1 km from the Fañabé beach

2 km from Golf Costa Adeje

2 km from Tenerife Top Training

6 km from Magma Arte & Congresos convention centre

7 km from Siam Park

7 km from Playa de las Américas beach

10 km from Los Cristianos Port

25 km from the Los Gigantes cliffs

27 km from Tenerife Sur airport

43 km from Teide National Park

66 km from Loro Parque theme park

83 km from La Laguna

84 km from Santa Cruz de Tenerife

85 km from Tenerife North airport



Coordinates: 28° 5' 49.54" N / 16° 44' 58.09" W

## Description

The **H10 Costa Adeje Palace** is an exclusive hotel located in Costa Adeje, on the seafront and with direct access to La Enramada beach. It is worthy of note for its great dining options, its magnificent swimming pools, its new seafront water park, gardens, waterfalls and charming spots.

In addition, it offers a complete entertainment programme for the whole family, a Despacio Beauty Centre, and Privilege, Exclusive Rooms and Services.

### 467 rooms

**Complimentary Wi-Fi** throughout the hotel plus **Internet Corner**

**4 outdoor pools (1 fresh water, 1 fresh water heated in winter, 1 ecological salt Water and 1 for children's)**

**2 infinity pools for adults only**, with salt water extracted from 80 m below the surface of the sea (1 exclusively for Privilege guests)

**1 outdoor jacuzzi** (for adults only and Privilege guests)

**Jungle Park children's water park**

**4 restaurants and 4 bars**

**Despacio Beauty Centre** with indoor **swimming pool** heated in winter, **jacuzzi** (only adults) and **gym**

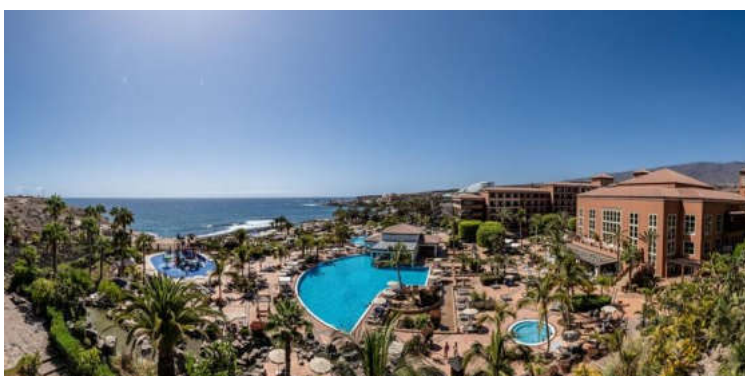
**MiniClub Daisy, Blue Team, golf packages and green fees**

**4 meeting rooms**

**Outdoor parking** (unattended) and **outdoor bicycle parking**

**Private indoor car park, airport transfer service and limousine service** (booking required, \$)

**Charging points for electric vehicles (\$)**



## Rooms

The **H10 Costa Adeje Palace** has bright and spacious rooms, decorated in neutral colours and fully equipped with all the amenities:

Flat screen TV with international channels

Nespresso coffee machine with 100% compostable capsules or kettle (both on request and with charge, complimentary in the Superiors, Privilege rooms and Junior Suites)

Minibar (On request and \$. Free of charge in All Inclusive without refill)

In-room safe (\$)

Climate control system

Complimentary Wi-Fi

Bathrobes and slippers (on request and with charge)

Fully equipped bathroom with 1800 W hairdryer, magnifying mirror and eco-friendly dispensers from the Earth Collection

Telephone

Desk

The hotel offers the option of an exclusive in-room ozone treatment (on request and \$).



DOUBLE ROOM

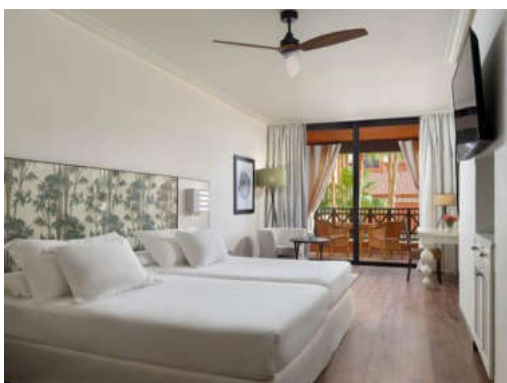
**Double Rooms:** elegant approximately 34 m<sup>2</sup> rooms featuring a 7 m<sup>2</sup> balcony overlooking the gardens. They feature either a 1.80 x 2 m double bed or two 1.20 cm x 2 m twin beds. Possibility of installing an extra 0.90 x 1.80 m bed or a 0.58 x 1.17 m cot. They feature a bathroom fitted with a bidet and a bathtub or rain-effect glass shower.



DOUBLE ROOM WITH LATERAL SEA VIEW

**Double Rooms with Lateral Sea View:** Double Rooms with balcony with side views of the sea.

They can have a double bed of 1.80 x 2 m or two single beds of 1.20 x 2 m. Possibility of provide an extra bed of 0.90 x 1.80 m or a cot of 0.58 x 1.17 m. Featuring a bathroom fitted with a bidet and a bathtub.



SUPERIOR DOUBLE ROOM

**Superior Double Rooms:** 34 m<sup>2</sup> rooms featuring a 7 m<sup>2</sup> balcony with side views of the sea, the swimming pool or the gardens. They feature either a 1.80 x 2 m double bed or two 1.20 cm x 2 m twin beds. Possibility of installing an extra 0.90 x 1.80 m bed or a 0.58 x 1.17 m cot. They feature a bathroom with a rain-effect glass shower. In addition to the usual services, they also include:

Nespresso machine with 100% compostable capsules or kettle restocked daily free of charge

Welcome gift in the room

One complimentary bottle of cava upon arrival

Bathrobe and slippers

Night-time turndown service

Late check-out (subject to availability)

Bottle of water per person on arrival



PRIVILEGE ROOM

**Privilege Rooms:** 34 m<sup>2</sup> rooms in a privileged location featuring a 7 m<sup>2</sup> balcony with side views of the sea, the swimming pool or the gardens. They feature either a 1.80 x 2 m double bed or two 1.20 cm x 2 m twin beds. Possibility of installing an extra 0.90 x 1.80 m bed or a 0.58 x 1.17 m cot. Privilege Rooms offer various amenities apart from those provided in the other rooms. For more details, see the **Privilege** section.



FAMILY ROOM

**Family Rooms:** specially designed with children in mind, Family Rooms are 40 m<sup>2</sup> and include a 7 m<sup>2</sup> terrace overlooking the sea, the swimming pool or the gardens.

Complete with 2 m x 2 m King Size bed and a 0.80 m x 1.80 m sofa bed or an extra 0.90 x 1.80 m bed or a 0.58 x 1.17 m cot. Accommodates up to 3 adults or 2 adults and 2 children. They also offer:

Daisy welcome kit

Bathroom with rain-effect glass shower and exclusive Daisy amenities for the little ones



JUNIOR SUITE

**Junior Suites:** spacious rooms from 50 to 67 m<sup>2</sup> with a bedroom, adjoining living area and a 12 to 24 m<sup>2</sup> terrace overlooking the sea, the pool or the gardens. Complete with 2 m x 2 m King Size bed and a 0.80 m x 1.80 m sofa bed. Possibility of installing an extra 0.90 x 1.80 m bed or a 0.58 x 1.17 m cot.

43" TV with international channels

Nespresso machine with 100% compostable capsules or kettle restocked daily free of charge

Bathrobe and slippers

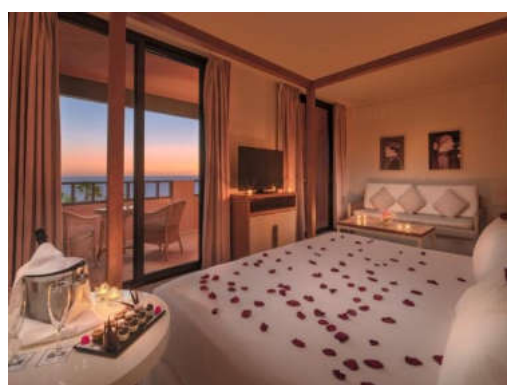
Pillow menu

Night-time turndown service

Late check-out (subject to availability)

Bathroom fitted with a bathtub or a glass rain-effect shower and scales

Bottle of water per person on arrival



HONEYMOON JUNIOR SUITE

**Honeymoon Junior Suite:** specially designed for couples for an unforgettable experience. A spacious 67 m<sup>2</sup> room including a 24 m<sup>2</sup> terrace overlooking the sea and the swimming pool. In addition to the amenities available in the Junior Suites, it also features:

Four-poster bed

Automated lighting system

Romantic welcome detail

Bathroom with bathtub, chromotherapy and scales

Romantic decoration

Bottle of water per person on arrival

**Note:** the décor, size and views of the rooms may vary depending on the room allocated.

## Restaurants and bars

**El Jable:** buffet restaurant with three show-cooking stations (one hot and two cold), boulangerie, themed corners and terrace.

**La Tosca:** à la carte restaurant with fine signature cuisine. It includes two terraces for outdoor breakfasts and dinners.

**Sakura Teppanyaki:** Asian restaurant with Teppan grills.

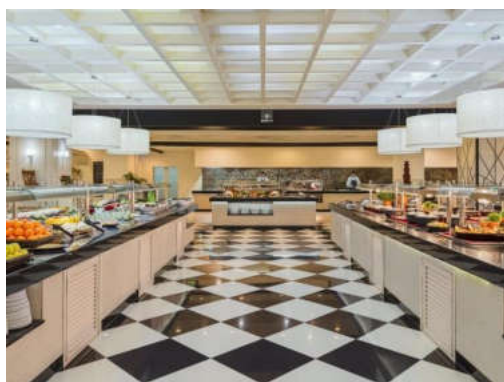
**La Choza:** poolside bar/restaurant with snacks and drink service.

**Adeje Piano Bar:** cocktail bar located in the lobby, with live music in the evening.

**Beach Club:** located next to an infinity pool on the seashore with a sandy area and Balinese beds.

**Teide celebration room:** with night-time entertainment for adults and children, professional shows and live music.

**Dress code:** in order to ensure a pleasant atmosphere in our El Jable (winter season), La Tosca and Sakura Teppanyaki restaurants, gentlemen must wear long trousers and ladies must wear smart casual.



EL JABLE



LA TOSCA



SAKURA TEPPANYAKI



LA CHOZA



ADEJE PIANO BAR



CHILL-OUT TERRACE BAR

## All Inclusive

Guests at the **H10 Costa Adeje Palace** who sign up for the All Inclusive programme can enjoy everything without worrying about a thing:

- Meals, top brand local and international drinks, cocktails and snacks.
- One complimentary dinner at the Sakura Teppanyaki Restaurant and another at the à la carte La Tosca Restaurant for guests with a minimum stay of one week (booking required and subject to availability).
- Complimentary minibar upon arrival (restocking charged separately based on consumption).
- 10% discount on treatments at the Despacio Beauty Centre and hairdresser services.
- 10% discount on purchases from the hotel boutique (accessories only).

Drinks included as per the All Inclusive programme menu.

## Privilege

For a unique experience, the **H10 Costa Adeje Palace** offers the possibility of signing up for **Privilege, Exclusive Rooms and Services**.

**Privilege Rooms:** in addition to the services offered in the other rooms, Privilege guests can also enjoy:

- 43" TV with international channels
- Kettle (restock free of charge)
- Nespresso machine with 100% compostable capsules and restocked daily free of charge
- Pillow menu and pillow-top mattress (on request)
- Luxor 40 bedding
- Bathrobe and slippers Privilege
- Complimentary in-room safe
- Exclusive pool towels in the room
- Night-time turndown service
- Complimentary ironing service (on request)
- Room cleaning and preparation (twice a day)
- Bathroom fitted with a glass rain-effect shower
- Hair straightener (on request)
- Daily press
- Bottle of water per person on arrival

### Exclusive access spaces:

**Privilege Lounge:** an air-conditioned room with bar service, TV and computers with Internet.

**(NEW FEATURE!) Privilege area with jacuzzi and infinity pool located right on the seafront** with salt water (extracted from 80 m deep from the ocean) and heated. Access to the infinity pool and jacuzzi is exclusively for adults.

### Food and drinks:

- Breakfast and dinner at the à la carte La Tosca Restaurant (booking required, depending on availability and your booking scheme).
- Dinner at the Sakura Teppanyaki Restaurant (with prior reservation, depending on availability and your booking scheme).

### Services:

- 25% discount on treatments at the Despacio Beauty Centre and hairdresser services (on purchases over 50€).
- 10% discount on purchases from the hotel boutique (accessories only).
- Late check-out (subject to availability), personalized check-in and check-out.
- Personalized guest service and porter service.
- Free parking slot (subject to availability)
- Free sauna (1 hour per stay)



PRIVILEGE LOUNGE



PRIVILEGE INFINITY POOL AREA



PRIVILEGE TERRACE WITH SEA VIEWS

## despacio beauty centre

The **H10 Costa Adeje Palace** features a **Despacio Beauty Centre**, where you can unwind and pamper your body and mind.

Swimming pool (heated in winter) and Jacuzzi under a glass dome roof.

Sauna and Turkish bath.

Gym with cardio, aerobics and bodybuilding equipment.

Massages and facial and body treatments.

Hair and beauty salon.

Access to the Despacio Beauty Centre is not allowed for children under 15.

Access to the pool, jacuzzi and gym is free. Access to the rest of the Despacio Beauty Centre facilities is charged separately, as are all of its services and treatments.



INDOOR SWIMMING POOL



TREATMENT ROOM



GYM



**Daisy Club:** a complete programme of activities for children aged 4–12, led by our team of professionals and accompanied by our mascot Daisy.

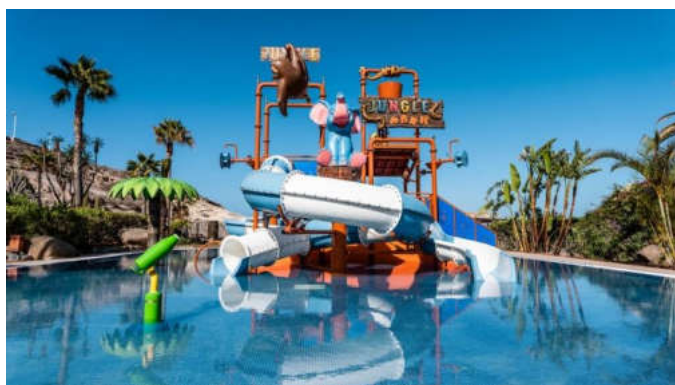
“Jungle Park” water park (NEW!): located on the seafront, this is the favourite place for the little ones with slides, games area and water jets, for them to enjoy a fantastic holiday with their parents. For children from 5 to 10 years old.

MiniClub Daisy and Playground.

Special entertainment programme for children depending on the season.

Water games, painting, arts and crafts, board games and other activities.

Minidisco with the Daisy mascot.



"JUNGLE PARK" WATER PARK



PLAYGROUND



At the **H10 Costa Adeje Palace**, you'll find an extensive programme of daytime and night-time activities led by our **Blue Team** entertainment team. We offer (depending on the season):

Aquabike, aquagym, table tennis, bingo, board games, giant chess, etc.

Aerobics, stretching, meditation, dancing classes and Spanish classes.

Cooking and cocktail workshops.

In addition to themed nights and lots of fun with shows and live music on an outdoor stage in summer.



PROFESSIONAL SHOWS - TEIDE CELEBRATION ROOM

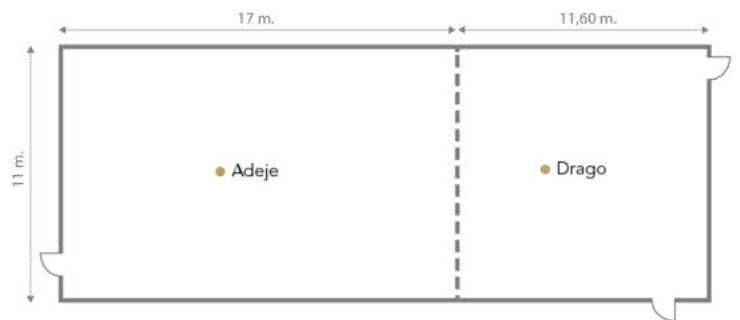
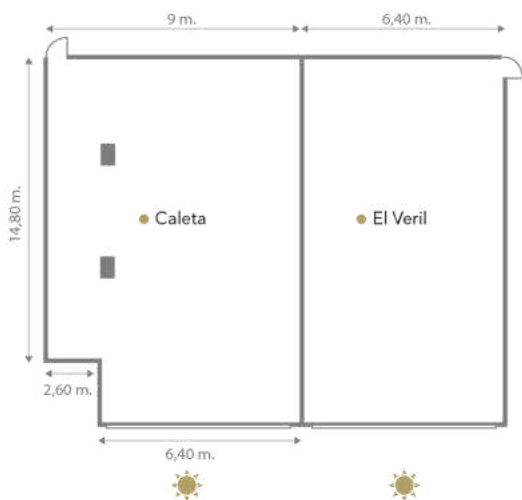


MEETINGS & EVENTS  
H10 HOTELS

The **H10 Costa Adeje Palace** provides four meeting rooms equipped with everything you need to hold any kind of event. Two rooms benefit from natural light, while the other two can be combined to accommodate up to 300 people. The hotel also features outdoor areas which are ideal for holding drinks receptions, banquets and coffee breaks such as gardens or terraces overlooking the sea.

Spaces for events	m2	Height	CAPACITY							
			Drinks reception	Theatre	Classroom	Boardroom	Banquet	Cabaret	U SHAPE	O SHAPE
ADEJE	187	2.70 m	187	150	125	60	140	60	60	-
DRAGO	127	2.70 m	127	120	70	40	70	30	40	-
ADEJE & DRAGO	314	2.70 m	270	300	210	120	190	80	120	-
CALETA	133	2.30 m	100	70	50	20	30	15	20	-
EL VERIL	95	2.30 m	95	70	50	20	30	15	20	-

\* Maximum capacity (optimal) recommended for these rooms by event type.



Luz Natural · Natural Light



ADEJE ROOM



DRINKS RECEPTION WITH SEA VIEWS



DRINKS RECEPTION IN THE GARDENS

## perfect day

Weddings  
& Celebrations

At the **H10 Costa Adeje Palace**, we take care of every detail so your celebration turns out just how you dreamt it would. The hotel is located in a unique setting and offers every service to ensure a perfect day: celebrations facing the sea, events in our gardens or by the pool, etc.



BANQUET IN LA CHOZA



BANQUET IN THE GARDENS



## Golf

The **H10 Costa Adeje Palace** is located close to top-class golf courses and offers the possibility of booking golf packages and special green fees, as well as an exclusive and personalized transfer and pick-up service from the golf courses (on request and \$).

## Quality Certificates and awards



Sistema de Gestión  
ISO 9001:2015  
www.tuv.com  
ID 9105081648





<b>BOOKING.COM</b>	Traveller Review Award – 2023, 2022, 2021, 2020 Booking Award – 2018, 2017, 2016, 2015, 2014, 2013
<b>BIOSPHERE</b>	Biosphere sustainable - 2024, 2023
<b>TRIPADVISOR</b>	Certificate of Excellence – 2019, 2017, 2016, 2013, 2012 H10 HOTELS is recognized by Tripadvisor as one of the ten “most excellent” medium-sized hotel chains in the world. – 2018
<b>HOLIDAYCHECK</b>	Recommended – 2023, 2019, 2018, 2017, 2016, 2015, 2014
<b>JET2HOLIDAYS</b>	Quality Award – 2017
<b>ALAS</b>	Prize for participating in the programme to hire people at risk of social exclusion – 2017
<b>SCHAUINSLAND REISEN</b>	Top Hotel Partner – 2023, 2017, 2016, 2015, 2014
<b>TODO BODA</b>	Certificate of Excellence – 2017, 2016
<b>FRAMISSIMA</b>	Best hotel in the category of Food and drinks – 2016 Best hotel in the category of Entertainment – 2016 Silver Category in “Spa Centre, Children’s Club, Accommodation” – 2016 Bronze Category in Personnel friendliness – 2016 Best hotel in the category of Children’s Club – 2015, 2014, 2013, 2012
<b>SCHOOL CAMPAIGN</b>	Tourism and Friendliness Prize – 2016, 2015, 2011, 2008, 2004, 2002, 2001
<b>HOTEL.DE</b>	Top Rated Hotel – 2016
<b>TOP HOTEL</b>	Top Hotel Partner – 2021, 2015, 2014
<b>HOLIDAY TEST</b>	Award – 2015
<b>ZOOVER</b>	Zoover Award – 2014, 2012, 2010 Recommended Award – 2013, 2011
<b>GRAN HOTEL TURISMO</b>	Best Hotel Chain at the 10 <sup>th</sup> Hotel Initiative Awards – 2014
<b>THOMAS COOK</b>	Marque of Excellence Award – 2010, 2009, 2008 Partner Hotel – 2003 Partner in Excellence – 2002
<b>NECKERMANN</b>	Neckermann Primo – 2009, 2008, 2002
<b>SAGA</b>	Food Award – 2008
<b>HOTELS.COM</b>	Loved by Guests - 2021
<b>WORLD TRAVEL MARKET</b>	World Travel Market Leaders - 2020



**Stay Green** is the **H10 Hotels Sustainability Plan**. In line with our commitment to society and the environment, its goal is to promote a model for responsible tourism in all our destinations.

As part of the Stay Green programme, the H10 Playa Meloneras Palace hotel has implemented the following actions:



Featured SDGs

- 100% renewable electricity consumption
- 4 electric vehicle charging points (\$)
- Generates electricity through its own solar panels (photovoltaic energy)
- Generates its own drinking water supply from seawater (desalination)
- Tablets in reception to promote digitalisation and encourage paper saving
- Participates in the ADEJE Circular Tourism Communities project, collecting bio-waste and plant trimmings for recycling and subsequent use at SERVIAGROC, an agro-ecological estate
- Participates in the Tenerife Isla Solidaria programme, regularly donating the use of one of our conference rooms for various NGOs' meetings