

Joachimsthaler Straße, 31-32 · D-10719 · Kurfürstendamm · Berlin · Germany

T +49 (0) 30 322 922 300

[h10.berlin.kudamm@h10hotels.com](mailto:h10.berlin.kudamm@h10hotels.com)

[www.hotelh10berlinkudamm.com](http://www.hotelh10berlinkudamm.com)

Information and bookings:

T +34 900 444 466

[reservations@h10hotels.com](mailto:reservations@h10hotels.com)

[www.h10hotels.com](http://www.h10hotels.com)

## Setting

The **H10 Berlin Ku'damm** is a four-star hotel located just a few metres from the famous Kurfürstendamm, the main shopping avenue in the west part of Berlin. From the hotel you can walk to the emblematic Kaiser Wilhelm Memorial Church and the Zoological Garden and the KaDeWe department store are also nearby. Its proximity to U-Bahn and S-Bahn stations enable excellent connection to the other main tourist attractions as well as to the airport and other points of interest.

Next to the Kurfürstendamm U-Bahn metro station

(U1 and U9)

450 m from the Kaiser Wilhelm Memorial Church

500 m from Zoologischer Garten train and metro station

(U2, U9, S3, S5, S7 and S9)

550 m from Augsburgers Straße U-Bahn metro station (U3)

900 m from the Zoological Garden (Tiergarten)

1 km from KaDeWe department store

3.6 km from Charlottenburg Palace

4 km from the Brandenburg Gate (Branderburger Tor)

4.5 km from Hauptbahnhof (central train station)

4.5 km from the Messe Berlin trade fair premises

4.7 km from ICC Berlin/City Cube

5.6 km from Museum Island (Museum Insel)

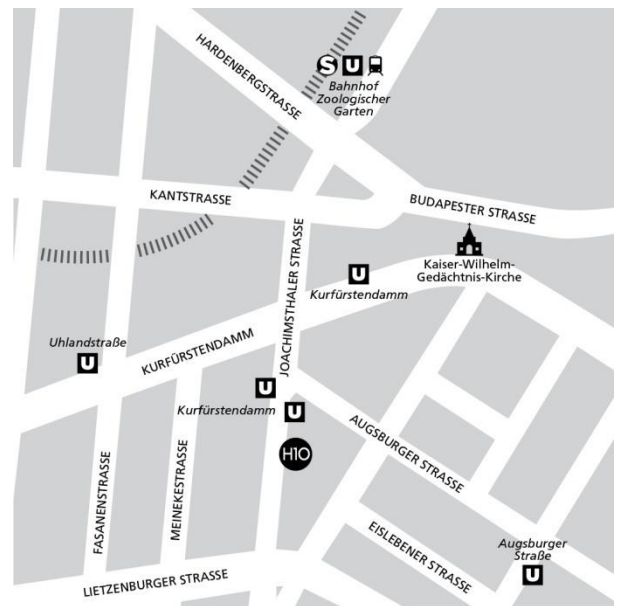
6.5 km from Alexanderplatz

22.5 km from Schönefeld airport (T5)

24.5 km from Potsdam

28 km from Brandenburg Willy Brandt airport (T1 and T2)

Coordinates: 52° 30' 07.26" N / 13° 19' 53.20" E



## Description

Housed in a historic and protected former school building, the **H10 Berlin Ku'damm** is an exclusive four-star hotel located just a few steps from the famous Kurfürstendamm street, the main commercial hub of the west part of Berlin. The college's former courtyard links the original building from 1889 with a newly built modern building. The hotel features the Salt & Pepper Restaurant with summer terrace, the Steps Bar, a Despacio Beauty Centre and seven meeting rooms.

**199 rooms**

**Complimentary Wi-Fi throughout the hotel**

**Business Corner**

**Salt & Pepper Restaurant**

**Steps Bar**

**Outdoor terrace (summer season)**

**Despacio Beauty Centre with gym, sauna and other services (free)**

**7 meeting rooms**

**Covered car park (\$)**

**Electric vehicle charging point (including Tesla)**



## Rooms

The **H10 Berlin Ku'damm** has spacious and modern rooms, as well as lofts equipped with all the amenities you might need to make your stay more pleasant.

LED TV with international channels

USB and video/audio connection

Minibar (\$ according to consumption)

Kettle (restocked daily) or Nespresso machine (in the superior categories)

Personal prevention kit (on request)

In-room safe

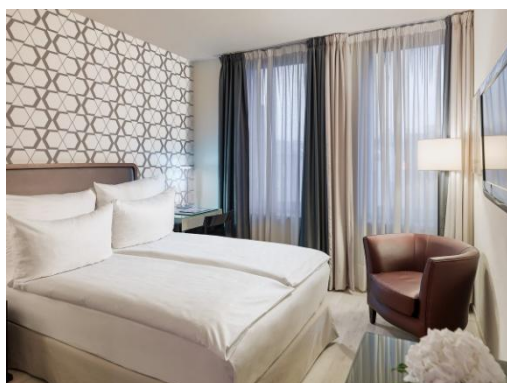
Individually adjustable climate control system (simultaneous heating and cooling)

Fully equipped bathroom with hairdryer and magnifying mirror

In addition, the hotel also offers the possibility of requesting items for children and babies such as cots, changing mats, potties, nappy bins, bottle warmers and a children's bathtub. All these items are offered free of charge but must be requested in advance to guarantee their availability.

The rooms are located in the contemporary hotel building, while the lofts are located in the historic building which maintains the typical features of old Berlin buildings such as its high ceiling and large windows.

### NEW BUILDING:



BASIC ROOM

**Basic Rooms:** cosy rooms measuring 18 m<sup>2</sup>, ideal for those travelling alone for business or pleasure although they come with a 1.35 x 2 m bed which can also accommodate a second person. They overlook the courtyard or the backyard of the hotel and feature a bathroom with rain shower.



DELUXE DOUBLE ROOM

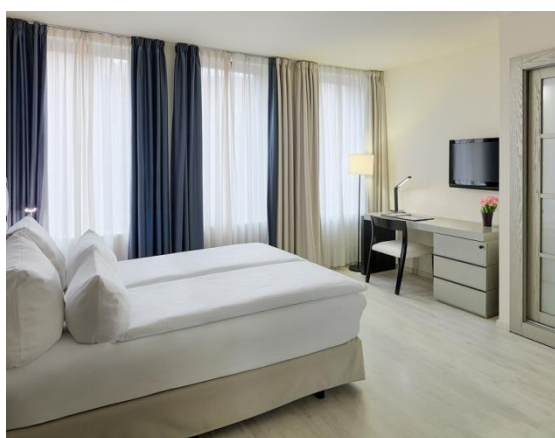
**Deluxe Double Rooms:** comfortable 25 m<sup>2</sup> rooms overlooking the courtyard or the backyard of the hotel. The majority of the rooms feature a 2 x 2 m or 1.80 x 2 m double bed, but in some units the bed measures 1.60 x 2 m. There are also rooms with two 1 x 2 m twin beds. Option of a bathroom with a bathtub or shower.



SUPERIOR DELUXE ROOM

**Superior Deluxe Rooms:** elegant 25 m<sup>2</sup> rooms located on the 7<sup>th</sup> floor overlooking the city. They feature a 2 x 2 m King Size bed or two 1 x 2 m twin beds. In addition to all the usual amenities of the other rooms, they also offer exclusive services:

- Nespresso machine
- One bottle of water per person upon arrival
- Pillow menu, bathrobe and slippers
- Bathroom with rain shower and scales



ADAPTED ROOM

**Adapted Rooms for people with reduced mobility:** comfortable 20 m<sup>2</sup> rooms overlooking the backyard of the hotel. They have a 1.35 x 2 m bed and feature:

- Large door for bathroom access
- Bathroom with slope-free and curb-free shower
- Support bars in the shower and WC



GRAND DELUXE

**Grand Deluxe Rooms:** spacious 32 m<sup>2</sup> rooms overlooking the courtyard of the hotel. They feature a 2 x 2 m King Size bed and, in addition to all the usual amenities of the other rooms, they also offer exclusive services:

- Nespresso machine
- One bottle of water per person upon arrival
- Pillow menu, bathrobe and slippers
- Bathroom with rain shower and scales



SUITE

**Suites:** spacious 44 m<sup>2</sup> rooms with a bedroom with 2 x 2 m King Size bed and separate living room with a 1.80 x 2 m sofa bed. They also offer:

- Nespresso machine
- An LED TV in the bedroom, and another in the living room
- One bottle of water per person upon arrival
- Pillow menu, bathrobe and slippers
- Bathroom with rain shower and scales

They overlook the backyard of the hotel and can accommodate up to 4 people.



## HISTORIC BUILDING:



JUNIOR SUPERIOR LOFT

**Junior Superior Lofts:** with a variable space of between 38–49 m<sup>2</sup>, the Junior Superior Lofts have a 2 x 2 m King Size bed and an integrated living room with a 1.80 x 2 m sofa bed. They overlook the street or the courtyard of the hotel and can accommodate up to 4 people.

They include a kitchenette equipped with a fridge, microwave, ceramic hob, crockery, cutlery and kitchenware. They have daily cleaning service (except kitchenette and kitchen utensils).

In addition to the usual services offered in all the rooms, they also offer one bottle of water per person upon arrival.



SUPERIOR LOFT

**Superior Lofts:** measuring between 49–52 m<sup>2</sup>, the Superior Lofts feature a bedroom with a 2 x 2 m or 1.80 x 2 m double bed and a separate living room with a 1.80 x 2 m sofa bed. They overlook the courtyard of the hotel and can accommodate up to 4 people.

They include a kitchenette equipped with a fridge, microwave, ceramic hob, crockery, cutlery and kitchenware. They have daily cleaning service (except kitchenette and kitchen utensils).

In addition to the usual services offered in all the rooms, they are also equipped with two LED TVs (one in the living room and the other in the bedroom) and offer one bottle of water per person upon arrival.



DUPLEX LOFT

**Duplex Lofts:** located on the top floor of the historic building, the Duplex Lofts measure 52 m<sup>2</sup> and are divided into two levels. The ground floor features a living room with a 1.80 x 2 m sofa bed, a kitchenette and a bathroom with shower. The second floor features the bedroom with a 2 x 2 m King Size bed and a bathroom with bathtub. A spectacular large window ensures both areas are bathed in light. They overlook the street and can accommodate up to 4 people.

The Duplex Lofts feature an LED TV on both floors.

The kitchenette is equipped with a fridge, microwave, ceramic hob, tableware, cutlery and kitchenware. They have daily cleaning service (except kitchenette and kitchen utensils). One complimentary bottle of water per person upon arrival.

**Note:** the décor, size and views of the rooms may vary depending on the room allocated.

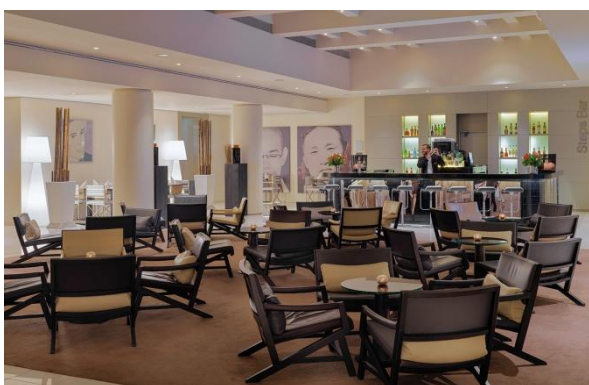
## Restaurants and bars



SALT & PEPPER

**Salt & Pepper:** restaurant located on the ground floor of the new building, featuring an exquisite breakfast buffet prepared with high-quality natural local products, combined with typical Mediterranean products including tomato bread and a variety of olive oils, as well as a selection of gluten-free and lactose-free products.

Group lunches can be held here (on request).



STEPS BAR

**Steps Bar:** located in the hotel lobby, it offers an exquisite selection of snacks, apéritifs and cocktails.

It offers delicious tapas, salads and hamburgers created through a fusion of traditional German cooking and the Mediterranean, both at lunchtime and at night.



OUTDOOR TERRACE

**Outdoor terrace:** a pleasant typical Berlin terrace open during summer (depending on the weather).

It is ideal for enjoying breakfast in the morning and, at the end of the day, the terrace transforms into a charming chill-out area for tasting delicious cocktails.

In addition, the Steps Bar moves to the terrace in the evenings and nights with a range of barbecues or delicious meals from its menu.

All restaurant services have been adapted to guarantee food safety in line with COVID-19 prevention protocols. Some restaurant services may be closed or subject to changes depending on the season. For more details, check with the hotel.

**despacio** beauty centre

The **H10 Berlin Ku'damm** has a **Despacio Beauty Centre**, perfect for unwinding and pampering body and mind.

Sauna, steam bath, shower temple, small water pool, ice fountain and thermal loungers  
Gym with weight training machines, exercise bike, treadmill and elliptical machine  
Massages and bespoke health and beauty treatments (\$/booking required)

Access to the Despacio Beauty Centre facilities is free.

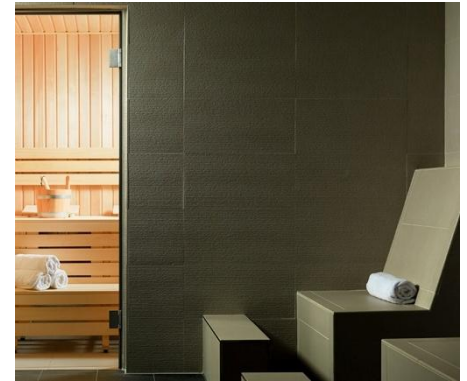
The Despacio Beauty Centre may be closed depending on the season. For more details, check with the hotel.  
Access to the sauna is exclusive for guests aged 16 and over.



ICE FOUNTAIN



GYM



SAUNA



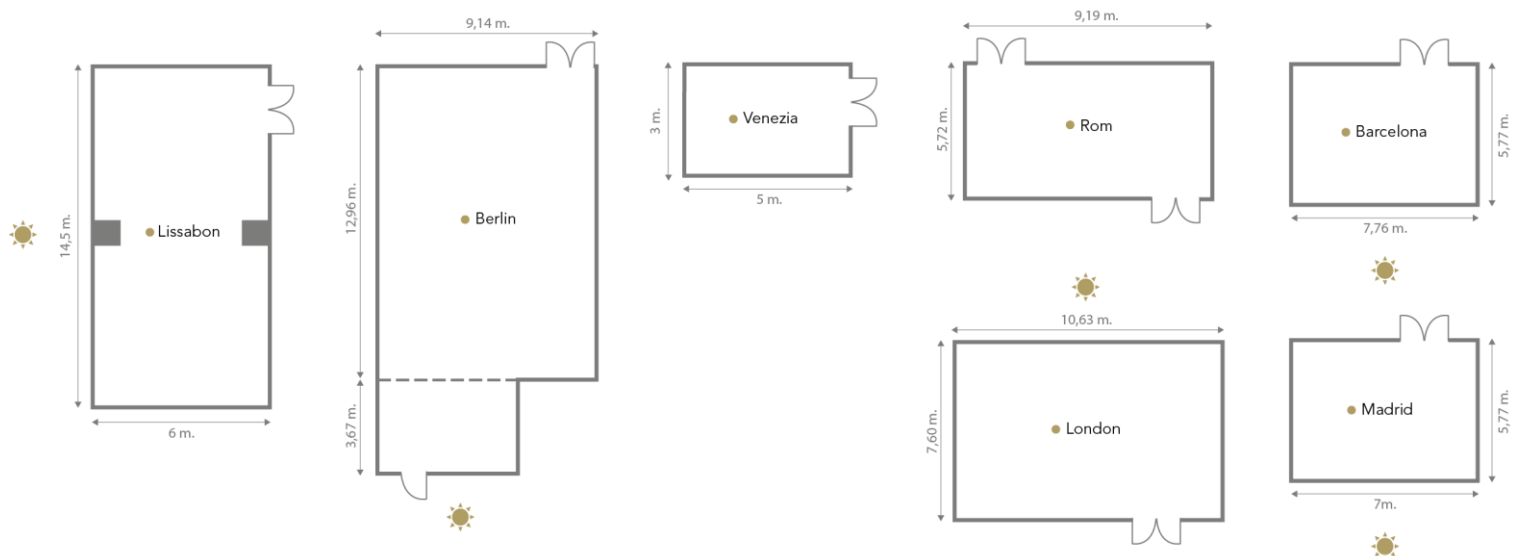
MEETINGS & EVENTS  
H10 HOTELS

The **H10 Berlin Ku'damm** is perfectly equipped for events, conferences and seminars for more than 100 people. It has seven large meeting rooms, five of which enjoy natural light. They are all equipped with the most modern technology, soundproofing and climate control. The hotel also offers the possibility of holding drinks receptions or banquet on the terrace\* during the summer.

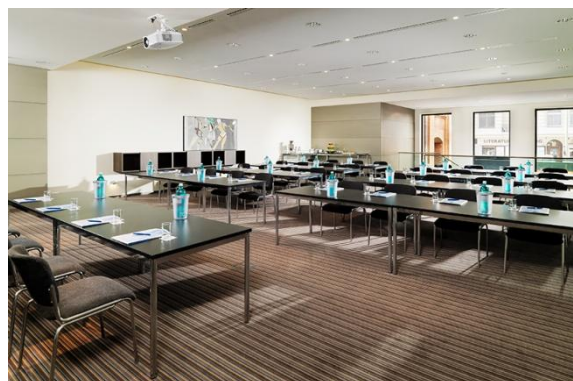
Spaces for events	m <sup>2</sup>	Height	CAPACITY							
			Drinks reception	Theatre	Classroom	Boardroom	Banquet	Cabaret	U Shape	O Shape
BERLIN	120	2.85 m	70	108	72	24	40	35	39	48
LONDON	80	2.85 m	35	63	45	20	30	21	33	42
LISSABON	80	3.45 m	35	63	45	20	30	21	33	42
ROM	53	3.25 m	-	36	24	16	20	16	15	18
BARCELONA	46	3.45 m	-	40	24	12	10	10	15	18
MADRID	41	3.45 m	-	24	18	12	10	10	15	18
VENICE	15	2.85 m	-	-	-	8	-	-	-	-
STEPS BAR	250	6.50 m	120	-	-	-	-	-	-	-
OUTDOOR TERRACE	220	-	80	-	-	-	40	-	-	-

\* Maximum (optimal) capacity recommended for these rooms by event type. During the health crisis, the capacity will be reduced and the layouts will be adapted to guarantee the safety distance and hygiene measures.

\* The original terrace furniture is used for banquets on the outdoor terrace.







BERLIN – CLASSROOM LAYOUT



LONDON – U SHAPE LAYOUT



LISSABON – CLASSROOM LAYOUT

## GDS

**AMADEUS:** WV BER359

**APOLLO/GALILEO:** WV 81213

**SABRE:** WV 1340

**WORLDSPAN:** WV 46359

**PEGASUS/TRAVELWEB:** WV 102363



**Safety Program**  
Certified by  
**BIO9000**

**At H10 Hotels, we want enjoying your holiday to be your only concern.** For this reason, we have defined some action and prevention protocols to ensure the health and well-being of our guests, employees and collaborators in all our establishments.

All the protocols and **safety and hygiene measures** designed follow the recommendations of the WHO and have been developed in conjunction with the **Preverisk Group**, a leading international company in food safety, hygiene and health, as well as **Bio 9000**, both of which have certified our hotels in order to guarantee the best implementation of measures put into place to prevent the spread of COVID-19 and inspire in our guests the greatest possible confidence.

Furthermore, to ensure optimum efficiency in cleaning processes, all of our employees have received specific training from **Johnson Diversey**, a leading international company in cleaning and disinfection procedures.

**Safety and hygiene in our facilities** has always been a priority for us, but now more than ever we are taking all possible steps to ensure that travelling continues to be a safe experience.

## Quality Certificates



Sistema de Gestión  
ISO 9001:2015

www.tuv.com  
ID 9105081648



## Awards

<b>BOOKING.COM</b>	Traveller Review Award – 2021, 2020 Booking Award – 2018
<b>HOTELS.COM</b>	Loved by Guests Award – 2021
<b>TRIPADVISOR</b>	Travellers' Choice – 2020 Certificate of Excellence – 2019, 2018, 2017, 2015, 2014, 2013, 2012 H10 HOTELS is recognized by Tripadvisor as one of the ten “most excellent” medium-sized hotel chains in the world. – 2018
<b>HOLIDAYCHECK</b>	Holidaycheck Award – 2018, 2017, 2016, 2015, 2013 Recommended – 2015 Top Hotel – 2014 Quality Selection – 2013
<b>TRIPEXPERT</b>	Experts' Choice Award – 2017
<b>THOMAS COOK</b>	1 <sup>st</sup> prize, Sunny Heart Award “City Trips” – 2017
<b>ZOOVER</b>	Zoover Award – 2015, 2012 Highly Recommended – 2014, 2013
<b>EXPEDIA</b>	Best Hotel of VIP Access – 2015, 2014 Expedia – 2012
<b>GRAN HOTEL TURISMO</b>	Best Hotel Chain 2014 at the 10 <sup>th</sup> Hotel Initiative Awards – 2014
<b>HOTEL.DE</b>	Top Rated Hotel – 2014, 2013, 2012, 2011
<b>H10 HOTELS</b>	3 <sup>rd</sup> Prize for Excellence – 2013, 2012 2 <sup>nd</sup> Prize for Excellence – 2011
<b>AIT-AWARD</b>	Global Award for The Very Best in Interior and Architecture – 2012