

Alcalá, 66 · 28009 · Madrid · Spain  
 T +34 91 435 10 60  
[h10.puerta.de.alcala@h10hotels.com](mailto:h10.puerta.de.alcala@h10hotels.com)  
[www.hotelh10puertadealcala.com](http://www.hotelh10puertadealcala.com)

Information and bookings:  
 T +34 900 444 466  
[reservations@h10hotels.com](mailto:reservations@h10hotels.com)  
[www.h10hotels.com](http://www.h10hotels.com)

## Setting

Strategically located on the Golden Mile in Madrid, next to the Retiro Park, the **H10 Puerta de Alcalá** enjoys a privileged location in the Salamanca district, the financial and commercial nerve centre of the capital. The hotel is located close to the most select boutiques and within easy reach of the city's emblematic tourist attractions, as well as providing a wide choice of restaurants, bars and entertainment.

- 120 m from Príncipe de Vergara metro station (Lines 2 and 9)
- 200 m from El Retiro Park
- 500 m from Velázquez metro station (Line 4)
- 550 m from the Madrid Palacio de Deportes (Sports Palace)
- 750 m from the Puerta de Alcalá
- 1 km from the Plaza de Cibeles
- 1.5 km from the Thyssen-Bornemisza Museum
- 1.7 km from the Prado Museum
- 2 km from the Puerta del Sol
- 2.2 km from Atocha train station (Renfe trains/AVE high-speed train)
- 2.5 km from the Plaza Mayor and the Reina Sofía Museum
- 3 km from the Royal Palace
- 3.7 km from the Estación Sur (Méndez Álvaro) bus station
- 3.8 km from the Santiago Bernabéu Stadium
- 6.2 km from Chamartín train station (Renfe trains/AVE high-speed train)
- 8.2 km from the IFEMA exhibition centre
- 10.6 km from the Wanda Metropolitano Stadium
- 11 km from Adolfo Suárez Madrid-Barajas Airport

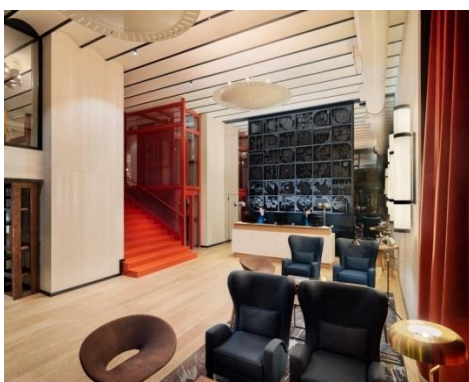
Coordinates: 40° 25' 19" N / 3° 40' 59" W



## Description

The **H10 Puerta de Alcalá** is located near El Retiro Park, in Madrid's exclusive Salamanca district, which houses the best boutiques and is the financial nerve centre of the city. The hotel features elegant rooms, the La Galería Restaurant, a Lobby Bar, four meeting rooms and the impressive El Cielo de Alcalá Terrace with plunge pool and panoramic views of the city.

- 138 rooms**
- Complimentary Wi-Fi** throughout the hotel
- Business Corner**
- La Galería Restaurant** for breakfast
- El Mirador Lobby Bar**
- El Cielo de Alcalá Terrace** with bar service, plunge pool and sun lounge area
- 4 meeting rooms**
- Parking** (\$) and subject to availability)
- Electric vehicle charging point** (including Tesla)



## Rooms

The comfortable rooms at the **H10 Puerta de Alcalá** feature every amenity to guarantee your well-being.

- 32" or 42" LED TV with international channels
- Pillow menu (on request)
- Minibar (\$ according to consumption)
- Kettle (subject to availability)
- In-room safe
- Climate control system
- Fully equipped bathroom with professional hairdryer, magnifying mirror and rain shower



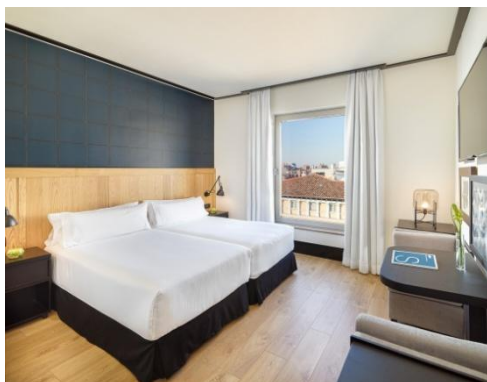
BASIC ROOM

**Basic Rooms:** smaller rooms overlooking the hotel's interior patio. Features a 1.35 x 1.90 m double bed.



CLASSIC DOUBLE ROOM

**Classic Double Rooms:** comfortable 21 m<sup>2</sup> rooms overlooking the hotel's interior patio. They come with a King Size bed (2 x 2 m) or twin beds (1 m x 2 m).



CLASSIC DOUBLE ROOM WITH VIEWS

**Classic Double Rooms with Views:** bright 23 m<sup>2</sup> rooms overlooking the Salamanca district. Featuring either one 2 x 2 m King Size bed or twin 1 m x 2 m beds.

In addition to all the usual amenities of the other rooms, they also feature:

- Nespresso machine
- Bathrobe and slippers
- Night-time turndown service
- Welcome gift

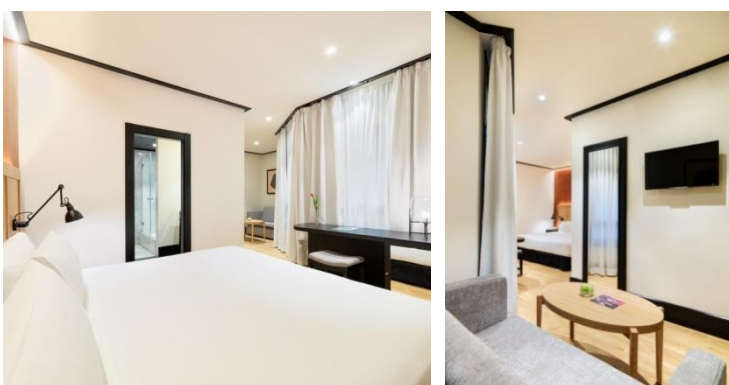


SUPERIOR DOUBLE ROOM

**Superior Double Rooms:** 25 m<sup>2</sup> rooms overlooking the hotel's interior patio. They feature one 2 x 2 m King Size bed or twin 1 x 2 m beds as well as a 1.35 m x 1.90 m sofa bed in the same room. This is an ideal option for families as the room can accommodate up to 3 adults or 2 adults and 2 children.

In addition to all the usual amenities of the other rooms, they also feature:

- Nespresso machine
- Bathrobe and slippers
- Night-time turndown service
- Welcome gift



DELUXE BEDROOM AND LIVING AREA

**Deluxe Rooms:** 26 m<sup>2</sup> rooms overlooking the hotel's interior patio. They feature a 2 x 2 m King Size bed or twin 1 x 2 m beds as well as a 1.35 m x 1.90 m sofa bed in a living area. This is an ideal option for families as the room can accommodate up to 3 adults or 2 adults and 2 children. In addition to all the usual amenities of the other rooms, they also feature:

A 49" flat TV in the bedroom area and a 32" one in the living area

- Nespresso machine
- Bathrobe and slippers
- Night-time turndown service



CLASSIC DOUBLE ROOM WITH TERRACE

**Classic Double Rooms with Terrace:** 21 m<sup>2</sup> rooms featuring a King Size bed (2 x 2 m) and a furnished 7 m<sup>2</sup> terrace overlooking the city. In addition to all the usual amenities of the other rooms, they also feature:

- Nespresso machine
- Bathrobe and slippers
- Night-time turndown service
- Welcome gift



DELUXE TERRACE ROOM

**Terrace Deluxe Rooms:** 22 m<sup>2</sup> rooms featuring a King Size bed (2 x 2 m) and a magnificent 14 m<sup>2</sup> furnished terrace overlooking the city. In addition to all the usual amenities of the other rooms, they also feature:

- Nespresso machine
- Bathrobe and slippers
- Night-time turndown service
- Welcome gift

**Note:** the décor, size and views of the rooms may vary depending on the room allocated.

## Restaurants and bars



LA GALERÍA

**La Galería:** an elegant restaurant with different spaces decorated with large glass cases with pictures.

It features an exquisite breakfast including healthy choices, in addition to various options for celiacs or people with other types of food intolerance.



EL MIRADOR LOBBY BAR

**El Mirador Lobby Bar:** open at midday and in the evening, it has large windows overlooking the Calle de Alcalá. Specialising in gourmet coffee, it also offers a selection of tasty Mediterranean tapas, home-made cakes, and cocktails.



EL CIELO DE ALCALÁ

**El Cielo de Alcalá:** an impressive terrace on the 8<sup>th</sup> floor of the hotel. It has a glassed-in plunge pool, a sun lounge area and impressive views over El Retiro Park and the Salamanca district.

It is the perfect outdoor spot to enjoy delicious Mediterranean tapas or relax with a cocktail while you watch the sun go down.



MEETINGS & EVENTS  
H10 HOTELS

The **H10 Puerta de Alcalá** has four meeting rooms, three of which benefit from natural light and can be joined to hold up to 130 people. In addition, it also features the El Cielo de Alcalá Terrace, an exceptional setting for cocktails, with stunning views of El Retiro Park.

Spaces for events	m <sup>2</sup>	Height	CAPACITY							
			Drinks reception	Theatre	Classroom	Boardroom	Banquet	Cabaret	U SHAPE	O SHAPE
NEPTUNO	48	2.7 m	50	50	25	22	25	15	20	-
CIBELES	113	2.7 m	100	90	70	42	50	35	40	-
NEPTUNO & CIBELES	161	2.7 m	130	120	100	-	70	50	-	-
RETIRO	38	2.7 m	30	30	18	20	24	18	18	-
EL MIRADOR	45	2.28 m	35	35	-	22	-	-	20	-
EL CIELO DE ALCALÁ TERRACE	164	3.45 m	90	-	-	-	-	-	-	-

\* Maximum capacity (optimal) recommended for these rooms by event type.



Luz Natural · Natural Light



CIBELES ROOM - "U" SHAPE LAYOUT



EL MIRADOR ROOM - BOARDROOM LAYOUT



EL CIELO DE ALCALÁ TERRACE

## GDS

**SABRE:** 14624  
**APOLLO/GALILEO:** C1842  
**WORLDSPAN:** 99293  
**AMADEUS:** MADALC  
**PEGS ADS / TRAVELWEB:** 99293

## Quality Certificates



Sistema de Gestión  
 ISO 9001:2015  
 www.tuv.com  
 ID 9105081648



## Awards

<b>BOOKING.COM</b>	Traveller Review Award – 2020 Booking Award – 2018
<b>TRIPADVISOR</b>	Certificate of Excellence – 2019, 2018 and 2017 H10 HOTELS is recognized by TripAdvisor as one of the ten “most excellent” medium-sized hotel chains in the world. – 2018